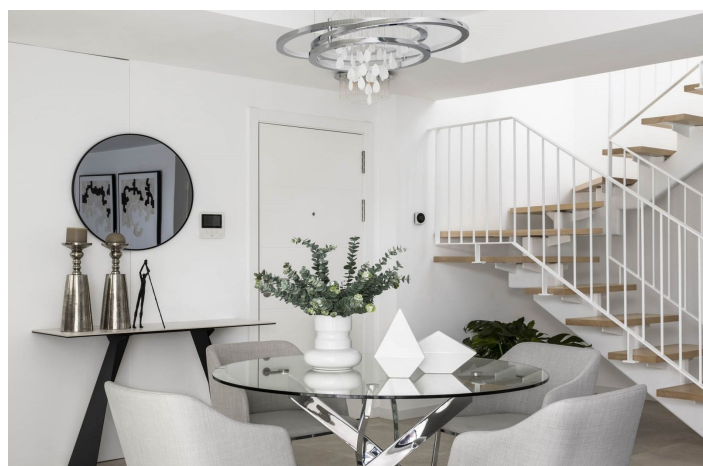




Penthouse Duplex for sale in Torremolinos, Torremolinos

1 300 000 €

Référence: R4783123 Chambres: 3 Bain: 2 Construite: 120m² Terrasse: 60m²





Costa del Sol, Torremolinos

A two-storey penthouse .. The flat has been designed and conceived to make the best use of the space, both for tourist and holiday stays, as well as for extended family living and remote work for digital nomads who want to take advantage of the proximity of the sea and the centre of Malaga with its beautiful old town. For those who appreciate the comfort of living close to a wide, sandy beach, but also close to shopping and service areas. The flat is also close to the Technological Park located below Malaga. It is also only a few minutes from the airport and has excellent connections to the city centre via the suburban railway, cycle path and promenade.

A flat to a high standard, with exclusive materials chosen for its avant-garde and innovative interior design, designed to make the most of the fabulous open sea and mountain views. The flat can be both a place to relax as well as to live and work for the whole family. A 5-minute walk from the beach and the promenade with its many bars offering Mediterranean cuisine.

The flat has a comprehensive air-conditioning system in each room.

Fully equipped kitchen.

3 bedrooms. Two with double bed and one with 2 single beds.

2 terraces.

2 bathrooms.

Space in underground garage.

The complex has a large swimming pool for adults and a smaller children's pool.

Playamar is one of the most interesting places to holiday and live on the Costa del Sol. In an exclusive enclave, facing the sea and perfectly connected to the city centre, in a thriving residential area, with wide avenues and green areas with a mass of restaurants, cafes and shops.



Spécification:

Caractéristiques

Près du transport

Terrasse privée

Salle de stockage

Double vitrage

Wifi

Fibre optique

Vues

Mer

Montagne

Panoramique

Meubles

Entièrement meublé

Sécurité

Complexe fermé

Système d'alarme

Stores électriques

Catégorie

En bord de mer

Orientation

Nord

Est

Ouest

Nord-Est

Sud-ouest

Paramètre

En bord de mer

Urbanisation

Près de la mer

Proche des magasins

Près de la ville

Cuisine

Entièrement équipé

Parking

Souterrain

Private

Climatisation

Climatisation

Cold A / C

A / C chaud

Condition

Excellent

Jardin

Communautaire

Services publics

Électricité