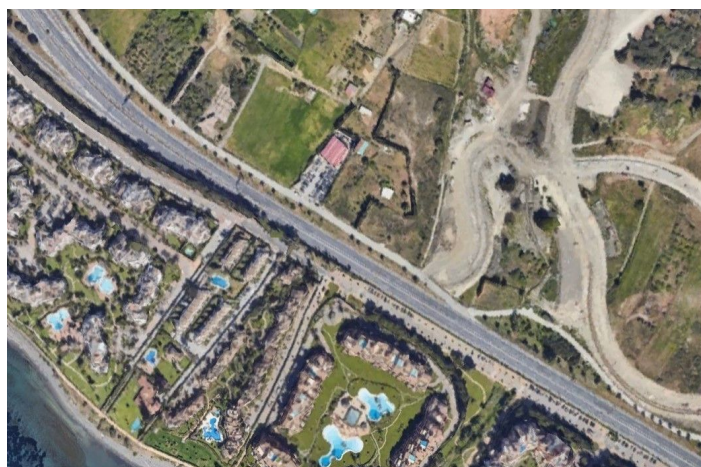
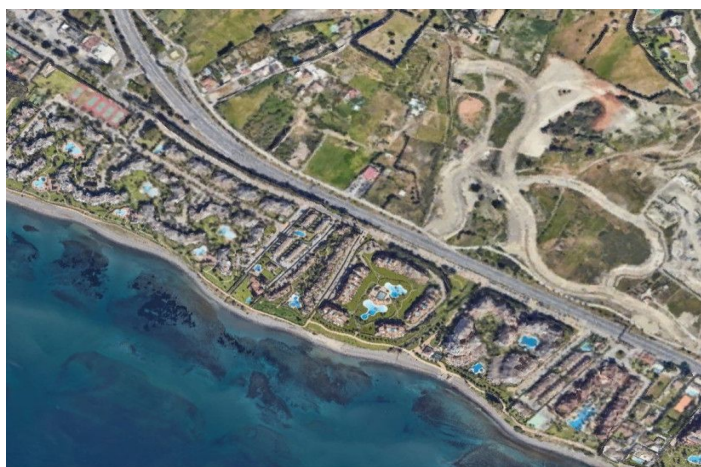




Land for sale in Estepona, Estepona

2 700 000 €

Référence: R4557880 Terrain: 9 500m²





Costa del Sol, Estepona

This asset offers an exceptional opportunity for those looking to invest in a prime location within the New Golden Mile area. The property encompasses a generous 9,500 square meters of land, providing ample space for various development possibilities. The section closest to the highway offers the potential to construct a 1,415 square meter commercial store, and its direct and clear visibility from the busiest road on the Costa del Sol makes it an ideal location for establishing a thriving business. Located just 3 km away from Estepona center, and 1 km from the beach, the land has easy access to the main roadway that connects Estepona, Marbella and the main cities of Malaga region and all Costa del Sol and Cadiz coastline, it is an exceptional opportunity for investors. It is also surrounded by numerous ongoing developments and projects, renowned and established workshops, as well as distinguished residential communities like Kempinsky 5 star Hotel, Bahia de la Plata and Alcazaba Beach. Furthermore, the upper part of the property can be utilized for parking, ensuring convenience for potential future customers and visitors. This additional feature enhances the investment potential of the property. In summary, this urbanizable land in the New Golden Mile area presents an outstanding investment opportunity due to its strategic location, substantial size, and development potential. If you are interested in obtaining more information about this property or exploring how to capitalize on this promising opportunity, we are available to provide further details and assist you in making an informed decision regarding this lucrative investment opportunity.



Spécification:

Caractéristiques

Près du transport

Salle de stockage

Buanderie

Sous-sol

Condition

Rénovation requise

Vues

Mer

Montagne

Panoramique

Parking

Private

Paramètre

Près de la mer

Proche des magasins

Près de la ville

Près des écoles