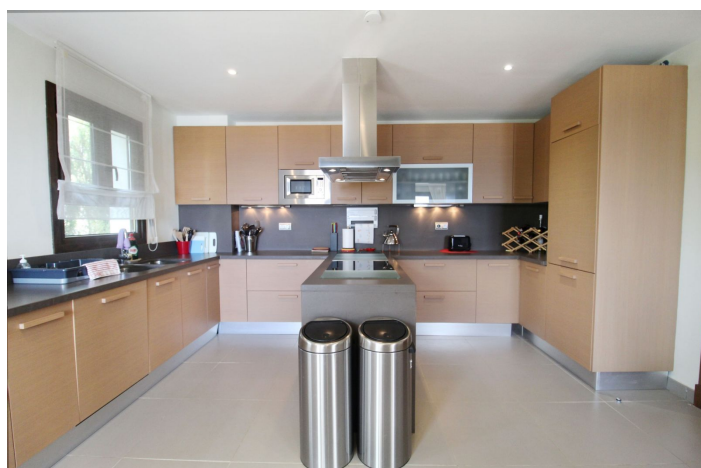




## Detached Villa for sale in Benahavís, Benahavís

1 795 000 €

Référence: R3250426 Chambres: 5 Bain: 6 Terrain: 939m<sup>2</sup> Construite: 639m<sup>2</sup> Terrasse: 41m<sup>2</sup>





---

## Costa del Sol, Benahavís

Situated on a gated community just a short walk from the beautiful village of Benahavis and all its famous restaurants, and just seven kilometres inland from the glamorous coastal hotspots of Puerto Banus and Marbella lies this contemporary south facing villa with absolutely stunning views out over the Mediterranean. This is a very spacious property with five large en-suite bedrooms distributed over three floors. The living & dining areas are open plan with lots of windows giving it a bright and airy feel throughout the day. Off the living room is a covered terrace which looks out to the heated pool and gardens, both maintained by the community and enjoy those amazing views out over the Mediterranean and La Concha mountain. The dining area is separated by the central fireplace and leads through to the large modern kitchen and breakfast area. The enormous lower level is currently used as a games room with bar, cinema and gym and enjoys natural light and views over the mountains. The standard of finish is high with underfloor heating in the bathrooms and good quality doors, windows and marble floors. The villa has private parking for two cars and plenty of storage rooms. The development is gated and has 24h security guards. This villa would make a fantastic low maintenance permanent residence or a perfect lock up and leave holiday home, which also has fantastic rental potential.



## Spécification:

### Caractéristiques

Terrasse couverte  
Terrasse privée  
Salle de bain attenante  
Double vitrage  
Armoires ajustées  
Salle de jeux  
Buanderie  
Sous-sol  
Fibre optique

### Vues

Mer  
Montagne  
Panoramique  
Pays  
Forêt

### Piscine

Communautaire  
Chauffé  
Indoor  
Private  
Piscine pour enfants

### Sécurité

Complexe fermé  
Sécurité 24 heures

### Orientation

Sud-Est

### Paramètre

Urbanisation  
Près de la ville  
Près des écoles  
Près de la forêt

### Cuisine

Entièrement équipé

### Parking

Private  
Covered  
Plus d'un

### Climatisation

Climatisation  
Cold A / C  
A / C chaud  
Cheminée  
Salles de bain U / F / H

### Condition

Excellent

### Jardin

Private  
Aménagé  
Entretien facile

### Catégorie

Luxe  
Revente