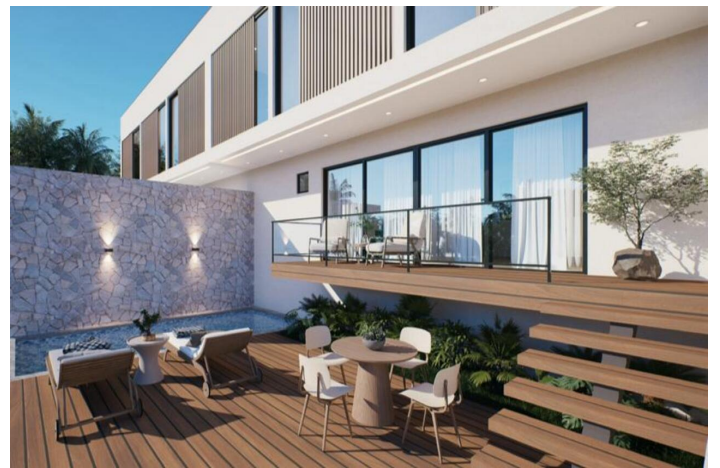
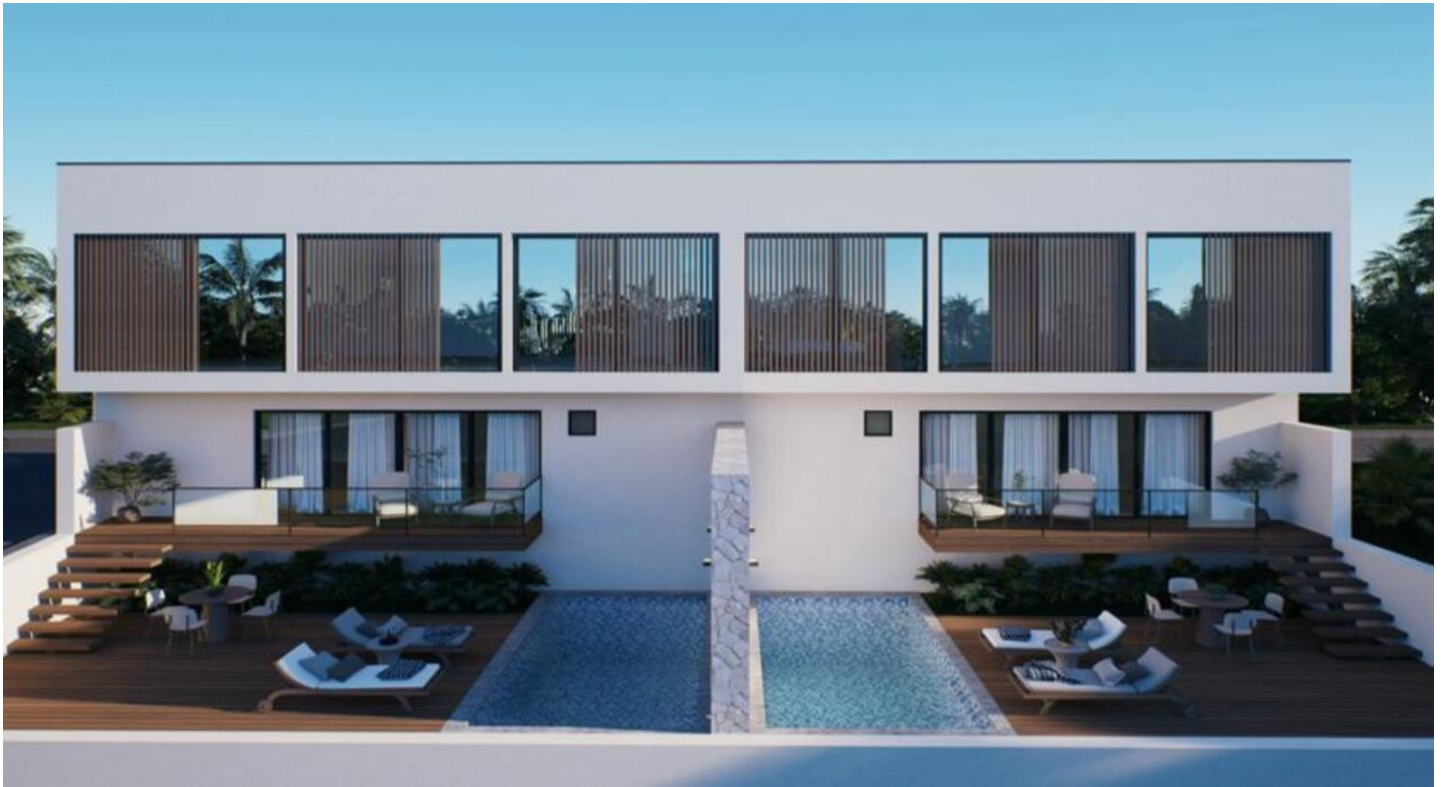


59,950 €

Reference: RS15406 Plot Size: 150m² Build Size: 120m²





Axarquía, La Viñuela

Urban plot , with basic project and ready to build. Prime, elevated plot above Viñuela village with perfect mountain views, all mains services, just a 4 minute walk to all amenities. Key point is that there is rustic land in front which cannot be built on so your views and windows will be fixed.