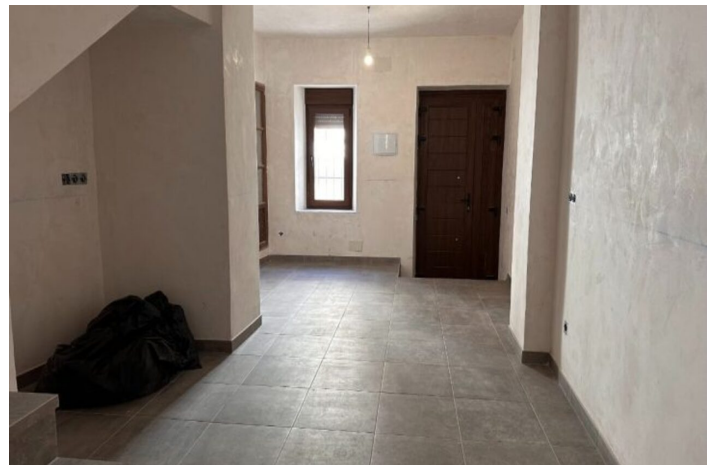




99.000 €

Referencia: RS15410    Dormitorios: 3    Baños: 1    Terreno: 87m<sup>2</sup>    Construido: 120m<sup>2</sup>





---

## Valle del Guadalhorce, Álora

Location! Location! Location! This traditional village house enjoys an enviable location in a central residential street of Álora pueblo. Built on a 87 m2 plot, the accommodation extends to 120 m2 and is divided over 2 levels. The ground floor has been professionally refurbished using high quality materials including installation of very stylish, quality doors and windows, new electrical installation, preinstallation of plumbing and new tiled floors. The accommodation on the ground floor offers one open plan room ideal for living room/ dining room / kitchen and one other room. The rest of the property including the patio area and terrace and the upper level of the property which offers potential for 2 bedrooms and a bathroom, requires refurbishment.