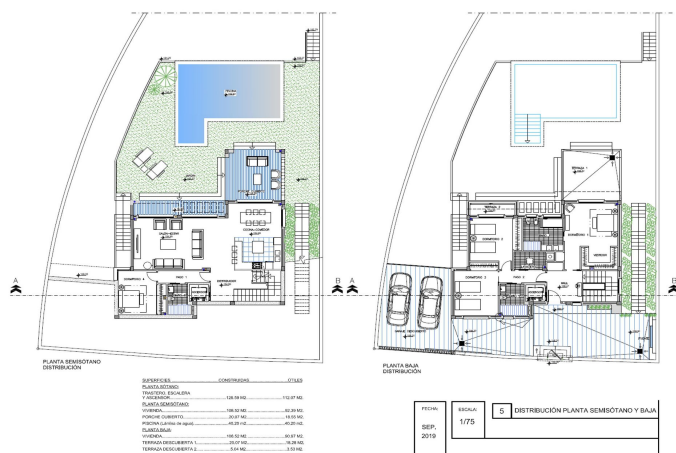




115.000 €

Referenz: RS16050 Grundstücksgröße: 676m<sup>2</sup>





---

## Valle del Guadalhorce, Coín

Residential plot with an informational preliminary project indicating that construction is possible on the plot, located in a popular urbanisation in Coín. This south-facing plot has magnificent views of the countryside and the Mijas mountains. The plot is slightly sloped, with green areas at the front and side. The preliminary project is for a modern two-story villa of 218m<sup>2</sup> plus a basement of 129m<sup>2</sup>, featuring 4 bedrooms, 3 bathrooms, and a pool. Please contact us for more information.