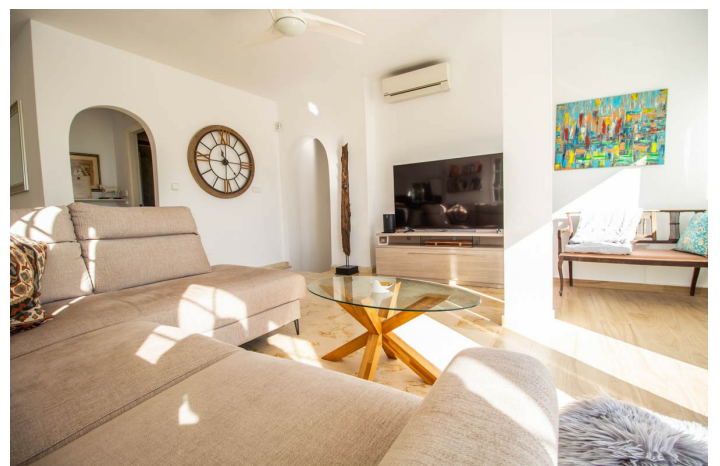


565,000 €

Reference: RS16125 Bedrooms: 4 Bathrooms: 2 Build Size: 131m²



Costa Blanca South, Orihuela Costa

This exquisite independent villa, spanning 161.68 m², has been meticulously renovated with high-quality, modern materials and offers a luxurious living experience. In addition to its spacious interior, the property boasts two generously sized terraces—one on the ground floor measuring 39.79 m² and another on the top floor of 35.72 m². A private infinity pool enhances the villa's appeal, offering an ideal space for relaxation while enjoying stunning views of the sea and surrounding pine forest from the first floor. The villa is thoughtfully distributed across two levels. On the entrance floor, there are four well-appointed bedrooms, two bathrooms, a guest toilet, and an office. Three of the bedrooms benefit from direct access to the terrace, providing a seamless connection with the outdoors and offering breathtaking views. The upper floor features a spacious, open-plan living room, a dining area, and a modern kitchen, all of which open onto a large terrace. This terrace includes a dedicated barbecue area, perfect for outdoor entertaining, while also delivering impressive panoramic views of the sea and the surrounding green area. An additional bathroom is also located on this floor for added convenience. Situated in one of the most desirable areas of the exclusive Las Ramblas Golf Course, the villa enjoys a prime location, just a short walk from the La Fuente Shopping Center, which offers an array of services including bars, restaurants, a pharmacy, and a bus stop. Additionally, it is within close proximity to both the Villamartín and Campoamor Golf Courses. For those seeking coastal living, the villa is only 5 kilometers from the beautiful beaches and the prestigious Dehesa de Campoamor urbanization, which provides a comprehensive range of amenities such as a marina, supermarkets, restaurants, a health center, and various sports facilities including tennis and paddle courts. The surrounding area is characterized by expansive green spaces that extend from the golf course to the coastline, creating a serene and picturesque environment.