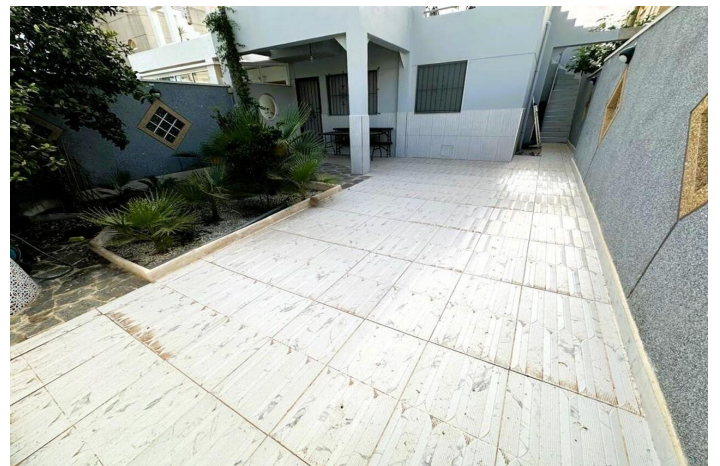
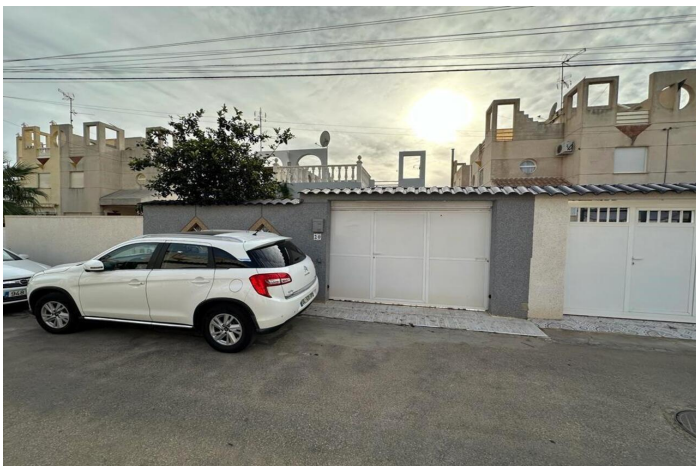


149,900 €

Reference: RS16145 Bedrooms: 2 Bathrooms: 1 Plot Size: 75m<sup>2</sup> Build Size: 60m<sup>2</sup>



## Costa Blanca South, Torrevieja

This 75 square meter semi-detached house is located in the La Siesta area, a quiet area surrounded by nature where you can see flamingos due to its proximity to the Natural Area. It has two double bedrooms equipped with built-in wardrobes, a full bathroom and a large, modern, fully equipped kitchen. The interior of the property features elegant finishes such as white lacquered carpentry or stoneware floors that give this house/chalet a modern touch and natural lighting thanks to its large exterior windows. It also has access for people with reduced mobility (PMR) as well as air conditioning/hot-cold pump which allows it to adjust to the Mediterranean climate. The exterior is simply spectacular; It has both a large terrace and a garden, making it possible to enjoy the typically Spanish sunny days with friends/family. Also take into account the proximity to shopping centers, schools, supermarkets, including easy connection by bus to any necessary point. Other notable amenities are automatic doors with car entrance, parking on the plot itself, storage room, TV, good condition. But if there is something truly special here, it would undoubtedly be having your own Private Solarium - another gem to add! Don't waste time! Contact us right now to visit it!