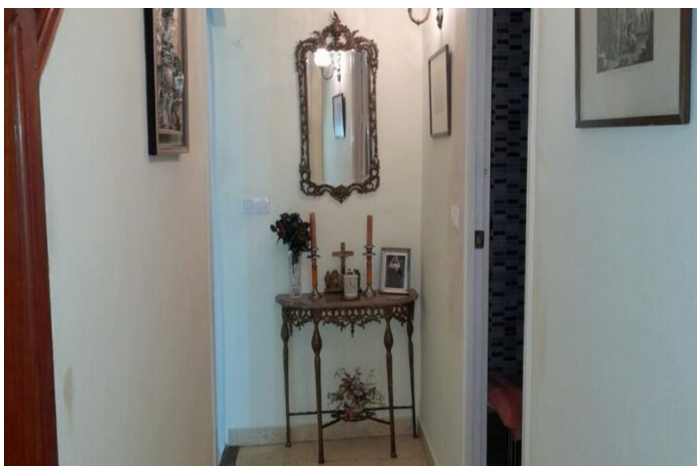




125.000 €

Referencia: RS16361 Dormitorios: 3 Baños: 1 Terreno: 100m² Construido: 144m²





Valle del Guadalhorce, Álora

This traditional village house enjoys a privileged position in a quiet residential street in the centre of Álora pueblo. Built on a 100m² plot the accommodation extends to 144m² and is distributed over 3 levels plus a semi-basement. At street level one enters via some very attractive antique wooden doors into a welcoming reception room which leads through to a 2nd sitting room and a dining kitchen which enjoys the benefit of a large pantry. From the kitchen one can access a patio ideal for “al fresco dining” and hosting fabulous views across Álora pueblo. An attractive staircase leads to the 1st floor which offers 2 double bedrooms and a modern bathroom. A further staircase leads to the top floor which hosts a further double bedroom, a small store room and access to a fabulous upper terrace. In addition to the main living accommodation there is also a semi-basement which currently offers one room (formerly a kitchen) and a “bodega” style room and allows access to an expansive patio area. This semi-basement can be accessed from the main accommodation but also has the advantage of access from the patio to a lane to the rear of the property so could easily be exploited as a separate little studio apartment. Although perhaps a little dated this property is in good habitable condition. All mains services are connected. ***Parking space available for 10.000 euros more***