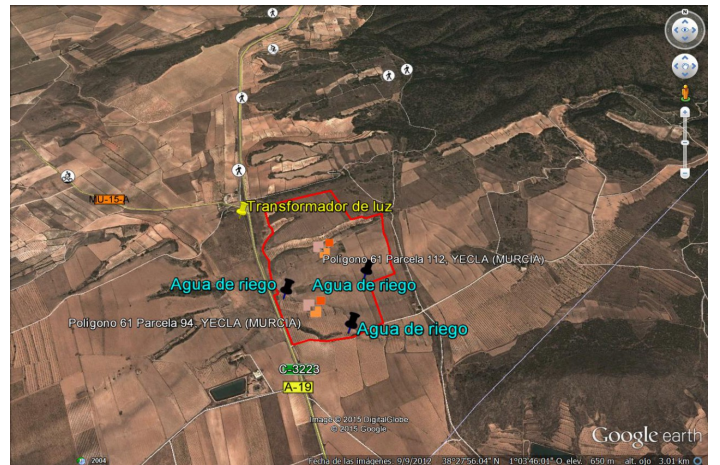




620.000 €

Referenz: RS16413 Grundstücksgröße: 407.580m<sup>2</sup>





---

## Altiplano, Yecla

Finca Las Quebradas between Pinoso and Yecla. This expansive property near the Sierra Salinas natural park in Las Quebradas (Yecla) offers an excellent investment opportunity in a peaceful, non-mining area with stunning 360° views. The land covers a total of 407,580 m<sup>2</sup>, including 82,803 m<sup>2</sup> of almond plantation, 5,589 m<sup>2</sup> of olive trees, 5,594 m<sup>2</sup> of scrubland, and 313,594 m<sup>2</sup> of tilled land suitable for growing cereals, vineyards, olive trees, almonds, or other crops. The property is building-approved and has access to electricity with a nearby transformer. Although it currently lacks drinking and irrigation water, there is potential to apply for a well permit of up to 7,000 m<sup>3</sup> for domestic or animal use. Access is convenient via a well-maintained paved road, with neighboring homes adding to the quiet, rural charm. Essential services are available in the nearby town of Pinoso, just 5 km away. We have a large portfolio of properties in the Costa Blanca and Costa Calida areas, specialising in country properties, villas, fincas, building plots and design and build options in the Alicante and Murcia regions with a particular emphasis on Elda, Monovar, Pinoso, Sax, Villena, Aspe, Fortuna, Albacete and many more surrounding areas. We have been established since 2004 and have decades of experience between the team which we bring to bear to help you find and secure your new dream home. We help you every step of the way to make sure your purchase in Spain is safe and hassle free. We are not here to sell you a property, we are here to help you realise your dream and find what is right for you. With us you are in the safest hands. Contact us now to have a no obligation chat about how you too can realise your dreams.