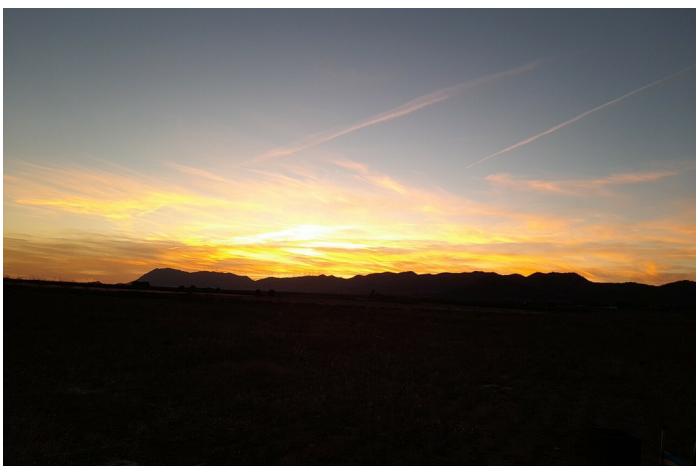
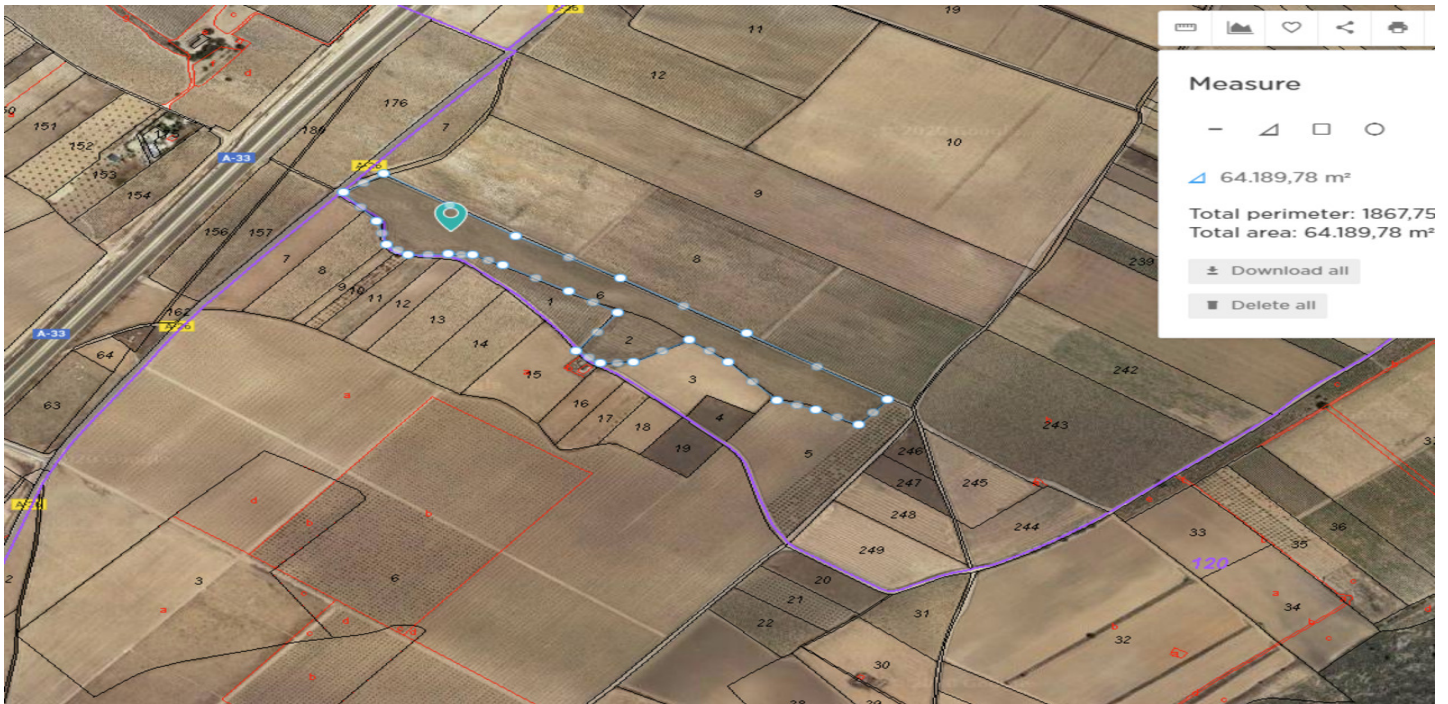




85.000 €

Referentie: RS16803





---

## Altiplano, Yecla

Building plot of land in Yecla, it has a main road frontage onto the A26 about 1km from its first junction from Yecla with the A33. This plot is just over 55,000m<sup>2</sup>, agricultural water is available but not connected and mains electricity is a few meters away which will need to be connected. Solar Panels would be ideal for this plot for those who want to be off-grid and energy-efficient. This plot and size of the land are ideal if someone wanted their stables, etc., and it is surrounded by many tracks ideal for hacking.