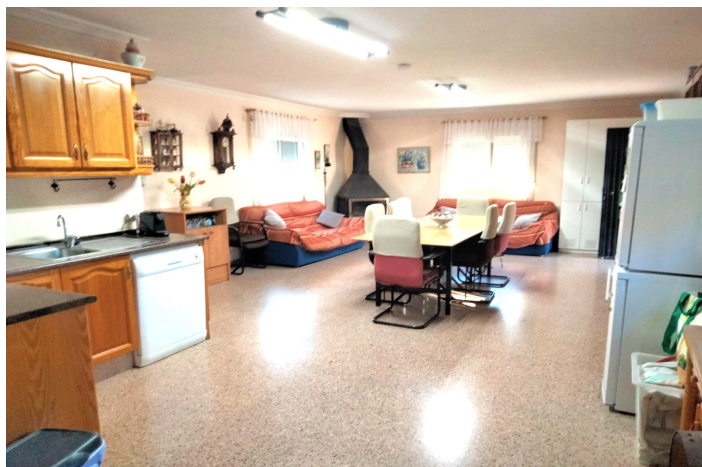




296 995 €

Référence: RS17159 Chambres: 5 Bain: 3 Terrain: 3 000m² Construite: 278m²





Vinalopó Medio, Hondón de las Nieves

Great exceptionally large family home with amazing views of the surrounding mountains and countryside, situated in Hondon de los Nieves an extremely peaceful beautiful place. Internally the house is in excellent condition ready to move into straight away. There's air conditioning units in two bedrooms and the living room, a large fireplace provides enough heating for the house and a lovely atmosphere in the short mild winter, the kitchen is very large and functional great for entertaining as is the additional large outside kitchen with large fireplace for cooking. Then for additional entertaining opportunities is the additional large woodburning oven great for roasting large joints or making incredible pizzas, the entrance is large and there are many areas within the garden to cater for animals to park numerous cars and then outbuildings to offer hobby spaces, workshop spaces and storage areas, there's beautiful views from all the windows and the large conservatoria is a wonderful place to hold large family dinners, being fully glazed offering great views. There's also a very large swimming pool essentially making this house the perfect house for entertaining your friends, family and yourself, perfectly situated to capitalise on the astounding views. Everything about this property is about enjoying the outside lifestyle. The garden is well maintained and very beautiful, the swimming pool is also excellent quality, a great house in an idyllic location. Hondon de los Nieves is a region of outstanding natural beauty, its micro climate produces an oasis of green tropical plants due to the formation of the surrounding mountains the perfect place for gardener's and lovers of nature. Hondon de los Nieves is close to the popular villages and towns of, Aspe, Hondon de los Frailes, La Romana, Novelda, and the cities of Elche and Alicante. Aspe being the largest nearby town is a traditional Spanish town with an agricultural heritage its gastronomy reflects the high quality of produce. There is a strong community feel here with good schools and services, Incredible mountains and beaches close by it's the perfect place to enjoy the outdoor lifestyle. Of architectural interest in the centre of Aspe are many traditional buildings, you will see the Basilica de Nuestra Señora del Socorro which is a beautiful example of the evolution of architectural styles in the 17th century and many lovely parks. Aspe is approximately 25 minutes' drive from Alicante airport, 30 minutes' drive from Alicante city and 15 minutes' drive to the historic city of Elche, there are also many beautiful villages such as Hondon de los Nieves, Hondon de los Frailes la Romana and vineyards to discover within a short distance of Aspe as well as spectacular countryside and mountain views. 5 bedrooms, 3 bathrooms, constructed area 278m² land 3000m² swimming pool price 296,995