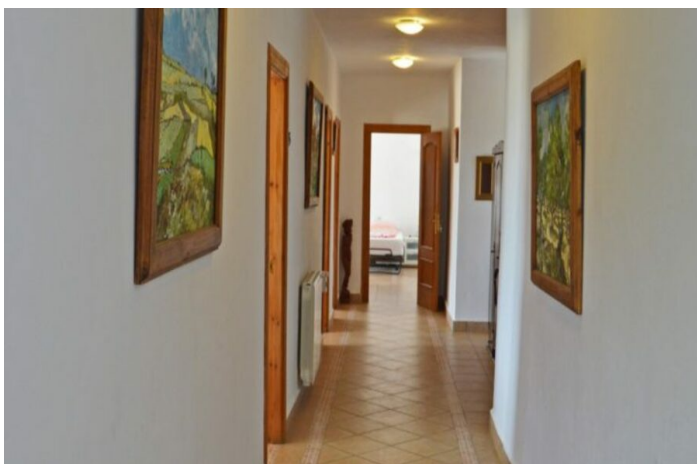




639.000 €

Referentie: RS17218 Slaapkamers: 7 Badkamers: 6 Plotgrootte: 25.624m² Perceelgrootte: 392m²





Sierra de las Nieves, Alosaina

Driving through the beautiful Andalusian landscape we can already see this IMPRESSIVE VILLA Lloyd, from afar between the mountains of Alosaina. It cannot be missed that this is the property we are going to visit today. Via a good dirt road of about 1 km we arrive at the Villa. We park the car and there is plenty of space for several cars to park. We are in front of a beautiful authentic Spanish double door. We leave it closed and enter the house through a door on the side. When opening the door we enter the hall. What immediately attracts attention is the spacious layout of the house because we can immediately look far away into the living room. Before we walk further we first look at the first, of no less than 7 BEDROOMS in total, which can be reached directly from the hall. This bedroom has an ensuite bathroom. Here comes our first idea. By closing the passage to the living room you can create an apartment with private entrance and private terrace. We walk through to the living room, which is overwhelmingly large, and extends over almost the entire width of the house. The living room is large enough so there is also room for a dining table with no less than 16 chairs. The open kitchen is simple and will need some attention to make it to your personal wishes. As we walk through the room we also pass the beautiful large authentic double door. This we open so the warm wind blows through the house. If it gets too hot then the air conditioning throughout the house can provide cooling. However, you will never get cold because this house also enjoys the luxury of a central heating system which is ideal in winter. Furthermore, this spacious living room has access to a separate bathroom and 2 bedrooms, one of which has an ensuite bathroom. The eye-catcher of this space is the gigantic terrace of 45 m² net BBQ which can be reached through the many windows/doors. These turn / tilt doors are all double glazed. From that terrace you have a beautiful panoramic view over the mountains and garden. We are so enjoying this view that we almost forget that we haven't seen half of the house yet and decide to move on quickly. Through a second hall on the side, where another bathroom can be found. We can choose to go up the spiral staircase or walk down. We choose that last one. Via a solid stone staircase we walk down where we end up in a long corridor. At the beginning of this corridor is a small kitchenette with a door to the terrace. Then we first come to a large bedroom with an ensuite bathroom. Further in the hallway there are two bedrooms and a very spacious bathroom with enough space for a bath. Also here comes the idea to split the large bathroom in two and give all the bedroom downstairs an ensuite bathroom. All the bedrooms downstairs have their own access to the terrace outside. This makes it not only a beautiful family home but also very well possible to use it as a Bed and Breakfast. We quickly walk back to the hall to walk up the spiral staircase. At the top of the spiral staircase we enter the 7th and last bedroom of this house, this square tower room has through the 4 semicircular windows a breathtaking view on all wind directions. Now that we've had a good look at the house we walk into the garden. Via a stone staircase we walk down to a nicely tiled terrace where a jacuzzi is placed. Walking through the garden we also see enough space and possibilities to place an above ground pool. In short, a beautiful villa in a very quiet place but certainly not isolated. The house is very easily accessible and less than 3 minutes from Alosaina. Also a good location in relation to the Andalusian inland but also the beaches of Marbella are less than 40 minutes away. The price is non-negotiable. AFO AVAILABLE. Property connected to town water.