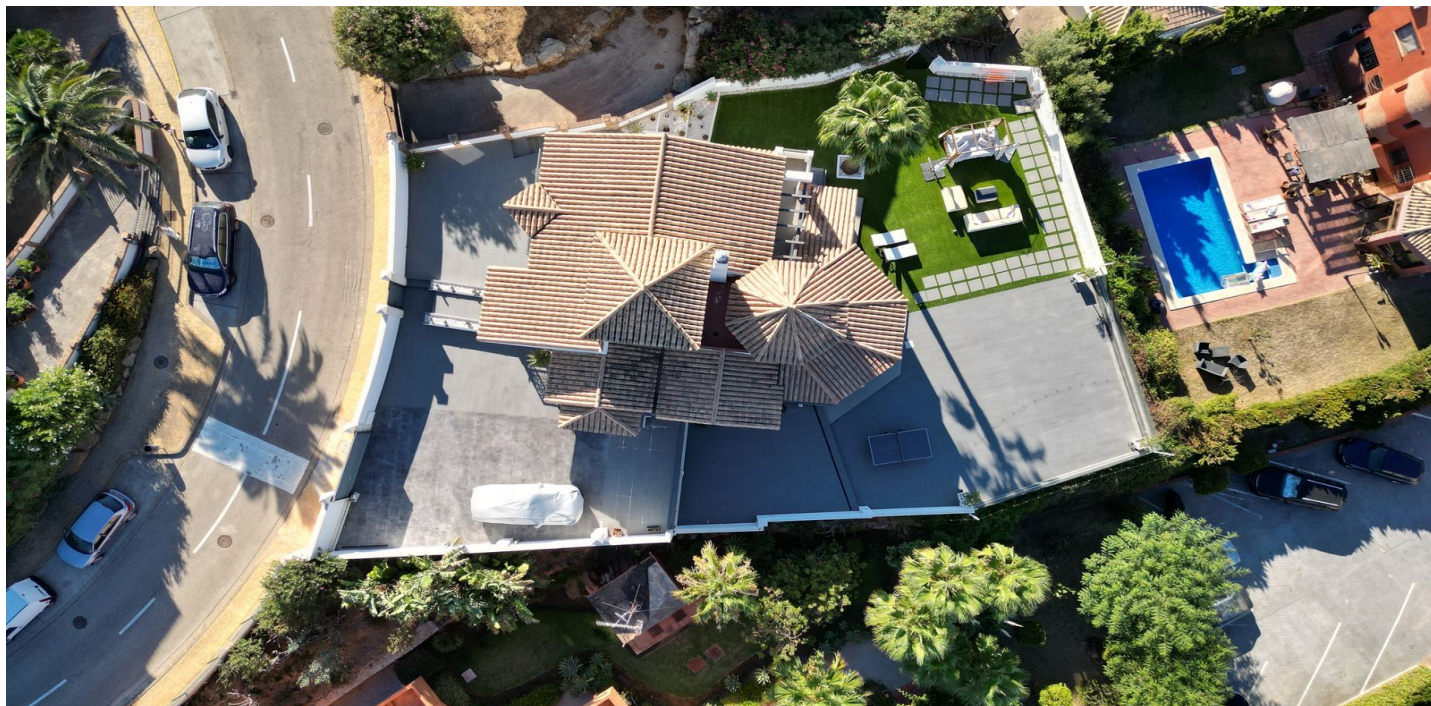




Detached Villa for sale in La Línea de la Concepción, Campo de Gibraltar

760 000 €

Référence: R4888501 Chambres: 4 Bain: 5 Terrain: 800m² Construite: 292m² Terrasse: 200m²







Costa de la Luz, La Alcaidesa

Villa on the seafront of La Alcaidesa. Its impressive views are focused on the La Alcaidesa Lighthouse, the sea and in the background the Rock of Gibraltar. Its almost 300 sqm are distributed over 4 floors. The entrance leads to a hall from which you enter a separate kitchen, a guest toilet and a living room with access to the terrace that offers the best views of the lighthouse and the sea. On the first floor there is a large bedroom of about 50 sqm with a dressing room, ensuite bathroom and its own terrace... The ground floor consists of 2 double bedrooms with a bathroom, one of which has direct access to the garden. The -1 floor has a splendid cinema room, with a screen and 6 large leather armchairs, a room that could easily be converted into a 4th bedroom. At the level of the garden, you finally access the wine cellar area, a large space with a kitchen, dining room, bar, toilet and pool table, the ideal place for meetings with friends and family. The garden, with artificial grass, offers the possibility of building a spacious pool of about 4x8 m2 and also has a porch with barbecue. The design of the house is elegant and modern, characterized by the luminosity in each and every one of its rooms. It is worth visiting, for its location, its perfect state of conservation and views. For dog lovers it is also the ideal place, not only is it located a few meters from the beach but there is very close, about 100 meters away, a landscaped park, with benches to walk and enjoy the views of this impressive coast.



Spécification:

Caractéristiques

Terrasse couverte
Terrasse privée
Salle de stockage
Salle de bain attenante
Armoires ajustées
Wifi
Salle de jeux
Bar
Barbecue
Sous-sol

Vues

Mer
Panoramique
Jardin
Golf
Plage

Piscine

Communautaire

Services publics

Électricité
Eau potable
Téléphone
Gaz

Orientation

Sud

Paramètre

Près de la mer
En bord de mer

Jardin

Private
Entretien facile

Catégorie

En bord de mer
Golf
Contemporary

Climatisation

A / C pré-installé

Condition

Excellent

Parking

Private