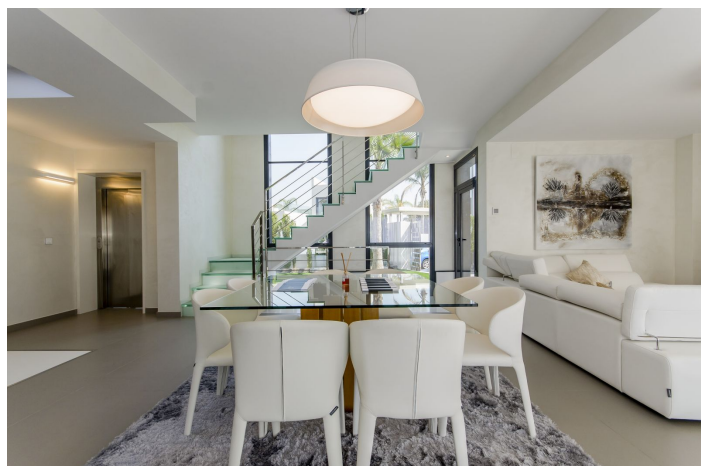




Detached Villa for sale in Dehesa de Campoamor, Orihuela

975.000 - 3.600.000**€**Referenz: R4889323 Schlafzimmer: 3 - 4 Badezimmer: 2 - 4 Garten: 156m² - 488m² Terrasse: 53m² - 112m²



Costa Blanca South, Dehesa de Campoamor

Our flagship development is a complex of detached villas in Dehesa de Campoamor. This development has been built for the most exacting clients. This development is in one of the best areas of Campoamor, just four minutes from the beaches of Orihuela and close to many essential services such as restaurants, supermarkets, pharmacies, etc. This is where we are building villas tailored exclusively to our clients' requirements, which may include two to five bedrooms, parking, a private garden, and swimming pools of varying sizes. The plots have around 500 square meters, in which customers can choose between 5 different models. **GEMMA:** The Gemma model is a detached Villa of 92m² designed with practical day to day living in mind. The house is a single-storey property which includes the living room, large kitchen, bathrooms and bedrooms. Customers can choose between two or three bedrooms and those that would like some further living space can add a basement or incorporate a further bedroom upstairs. **SILVIA** The Silvia model is one of our most popular Villas. The unbeatable design of the Silvia can be chosen with 3 or 4 bedrooms. This model is 157m² and is distributed between ground floor, first floor and solarium. The very large windows add to the space and lots of natural light to the house. **PENELOPE** An exceptional property built with an avantgarde design and as with all our models the latest and best materials on the market. This Villa has 193m² with 3 bedrooms and 3 bathrooms. All the rooms of the house are focused on receiving the maximum amount of natural light thanks to the ample windows throughout. **MARTA** One of the largest models in our range at this site is the Marta model which has 197m² of floor area and the customer can choose between 3 or 5 bedrooms depending upon their requirements. A well thought out distribution makes the most of the principle living areas with the highest quality materials offering a unique design everyone will fall in love with. Main design elements are finished in white with touches of wood and glass creating a calming and relaxed space comfortable for living and entertainment. **GRETA** The structure of Greta model is unique and breaks all the standards we have done up to now, the modern facade with a Mediterranean touch, the design of Greta is a revolution of all the house. Client can choose between 3 or 4 bedrooms, house has already a large living room, also all the best materials are chosen to design kitchen and bathrooms in the house.



Eigenschaften:

Merkmale

Badezimmer

Einstellungsschränke

Solarium

Einstellung

In der Nähe von Golf

In der Nähe des Meeres

In der Nähe von Schulen

In der Nähe von Marina

Küche

Voll ausgestattet

Küchenlehre

Kategorie

Neuentwicklung

Klimakontrolle

Kalte a/c

Heiße A/C.

Zustand

Neubau

Garten

Privat

Ansichten

Meer

Berg

Panorama

Pool

Privat

Parken

Privat