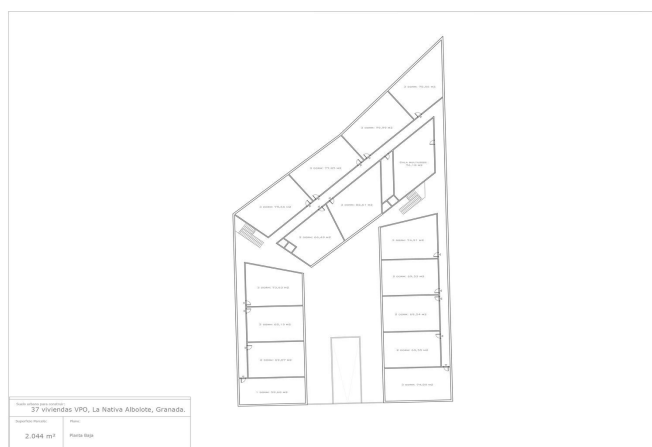
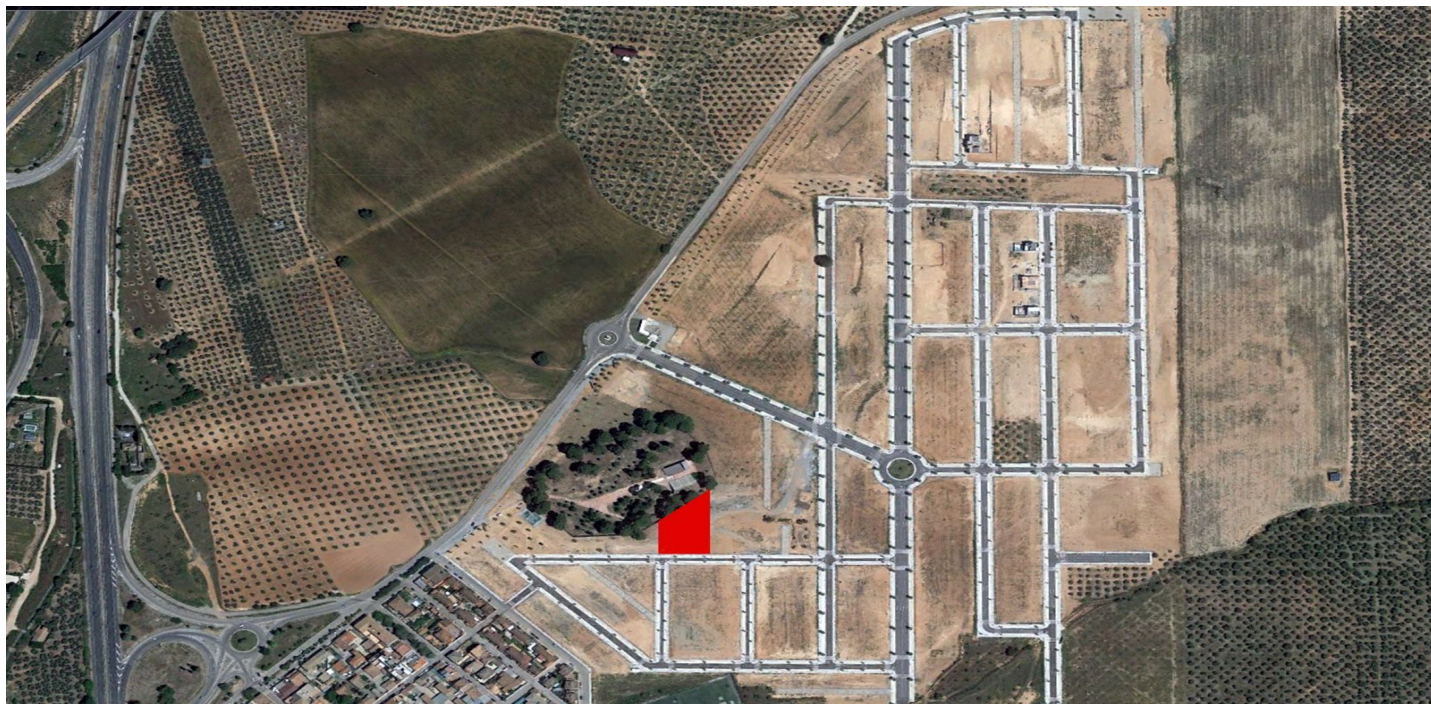




## Residential Plot for sale in Albolote, Albolote

290 000 €

Référence: R4066663 Terrain: 2 044m<sup>2</sup> Construite: 3 200m<sup>2</sup>





---

## Granada Inland, Albolote

Urban land available for the construction of subsidized housing in the most recent and important urban development in the metropolitan north of Granada. A great investment opportunity aimed at real estate developers who will be able to take advantage of the different official protection regimes for their development, both for sale, rent or rent with option to buy. The urban land is located in sector C-3 defined in the PGOU of Albolote, in La Nativa, El Chaparral, in a natural and quiet place with beautiful views to Sierra Nevada and Sierra Elvira, with excellent communication with the A -44, 10 minutes from Granada, a few minutes from the link with the A-92 motorway and 2 minutes from Albolote, where the last northern stop of the Granada metro is located. Albolote is a town with nearly 20,000 inhabitants, which has important logistics and commercial activity due to the important industrial estates, Juncaril and Asegra, among others. The plot has 2,044 m<sup>2</sup>, with a buildable area of 3,128 m<sup>2</sup> for the construction of a collective housing building of ground floor +2, the last floor being penthouses and with a basement in -1 without calculating buildable area, where it is allowed to build spaces of garage and storage rooms to annex to the houses. According to the architectural and urban study carried out, 37 homes with 1, 2 and 3 bedrooms can be obtained, each with its own garage and storage room. This is one of the possible solutions and the project will vary depending on the criteria of the developer and the different regimes of official protection to which he is interested in availing himself. No real estate management fees are charged to the buyer.



## Spécification:

### Orientation

Nord

Sud

### Vues

Montagne

Panoramique

Pays

Forêt

### Paramètre

Urbanisation

Près de la ville

Près de la forêt

### Condition

Nouvelle construction

### Parking

Communautaire

### Catégorie

Investissement

Bon marché

Prévu