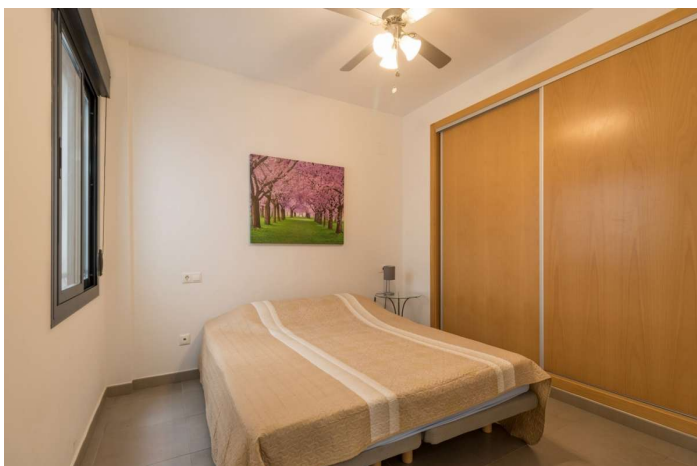




225.000 €

Referenz: RS17924    Schlafzimmer: 2    Badezimmer: 2    Garten: 85m<sup>2</sup>





---

## Costa Blanca North, Benitachell

Apartment in a building with an elevator. The apartment has a south orientation and views of farmland and towards the sea. The apartment building is situated in the town centre of Benitachell, all services are available on foot. The apartment has hot and cold air conditioning, two bedrooms, two bathrooms, and an open-plan living space. A parking bay in the underground garage is included.