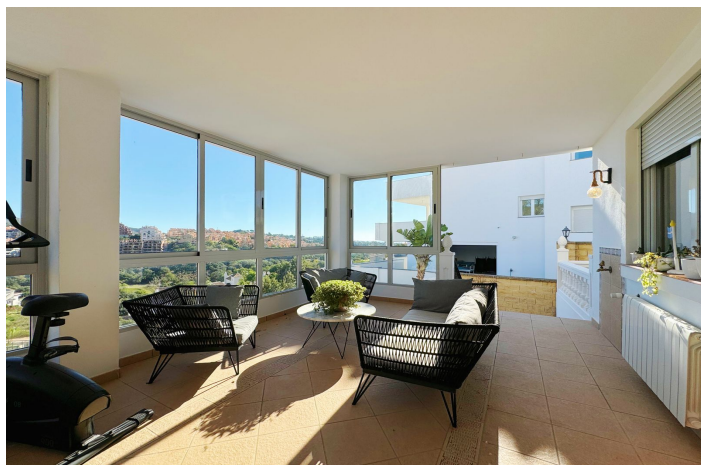




Detached Villa for sale in Elviria, Marbella

1,450,000 €

Reference: R4902220 Bedrooms: 8 Bathrooms: 7 Plot Size: 1,062m² Build Size: 543m²





Costa del Sol, Elviria

This villa in Santa Maria Golf, Elviria, is an expansive and large home with 8 bedrooms and 7 bathrooms, offering an exceptional blend of practicality. Set on a 1,062 m² plot with 543 m² of interior space spread across three levels, it's perfectly suited for families, friends, or groups seeking space, comfort, and lifestyle. The villa is designed to make the most of its stunning surroundings. An open-plan kitchen and dining area lead out to a covered terrace with views of the Mediterranean Sea and nearby golf course. The outdoor areas offer a private pool, gardens, and an African-style gazebo complete with an outdoor kitchen and barbecue—ideal for entertaining or relaxing. Inside, 8 spacious bedrooms, 6 with en-suite bathrooms, provide ample privacy for all occupants. The villa also features air conditioning and heating with individualized controls for each room, ensuring year-round comfort. There are two entrances—one from the main avenue and another backing onto the golf area—as well as parking for up to five cars. The location is unmatched. The villa is just a short walk from Elviria's commercial center, international schools, and some of Marbella's most beautiful beaches. Plage Casanis and Nikki Beach are only a few minutes away, while Marbella town, La Cañada Comercial Center and Puerto Banús, with their high-end shops, restaurants, and lively nightlife, are within a 15-minute drive. Malaga Airport is just 25 minutes away, making travel simple and convenient. Viewing highly recommended!



Features:

Features

Covered Terrace
Near Transport
Private Terrace
Satellite TV
Storage Room
Ensuite Bathroom
Double Glazing
Fitted Wardrobes
Solarium
WiFi
Gym
Games Room
Utility Room
Jacuzzi
Barbeque
Car Hire Facility
Near Church

Basement

Views

Sea
Mountain
Panoramic
Garden
Pool
Golf

Pool

Private

Garden

Private

Utilities

Electricity
Drinkable Water
Telephone

Orientation

East
West
South East

Setting

Commercial Area
Close To Golf
Urbanisation
Close To Sea
Close To Shops
Close To Schools
Suburban
Close To Forest

Furniture

Fully Furnished

Security

24 Hour Security
Alarm System
Electric Blinds
Entry Phone

Category

Investment
Resale

Climate Control

Air Conditioning
Pre Installed A/C
Cold A/C
Hot A/C

Condition

Good

Kitchen

Fully Fitted
Kitchen-Lounge

Parking

Garage
Private
Covered
Open
More Than One