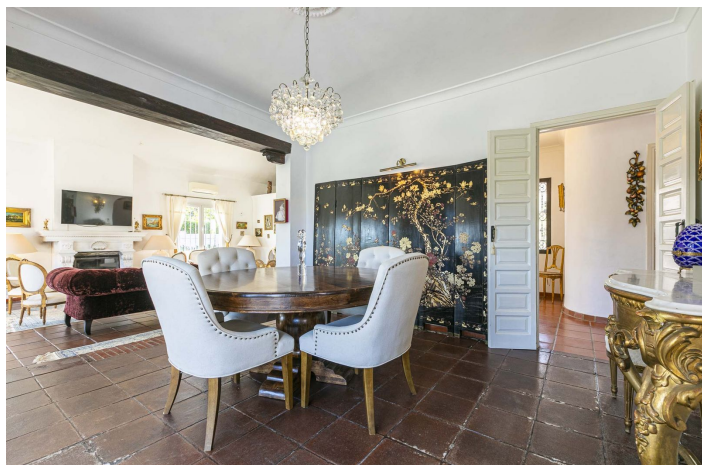




Detached Villa for sale in Benahavís, Benahavís

1 695 000 €

Référence: R4902322 Chambres: 4 Bain: 3 Terrain: 1 142m² Construite: 376m²





Costa del Sol, San Pedro de Alcántara

Discover the charm and elegance of this exquisite single-level family home, nestled in a peaceful enclave of lower Benahavis. Designed as a perfect blend of traditional warmth and contemporary sophistication, this home is adorned with luxurious updates to meet modern living needs. Step into the spacious and luminous main lounge, a haven of relaxation that opens directly to the beautifully landscaped garden and inviting pool area. The lounge seamlessly connects to a dedicated dining room, offering the ideal layout for family gatherings and entertaining guests. For culinary enthusiasts, the expansive modern kitchen is a dream come true, equipped to delight even the most discerning chef. The home features four generously sized bedrooms, each paired with a sleek, modern bathroom, ensuring comfort and privacy for every member of the household. Outside, the property truly shines. Enjoy alfresco living at its best with a sparkling pool, a fully equipped poolside kitchen, and a stylish lounge area perfect for soaking up the sun. On the entrance side, you'll find a serene patio space, private parking for multiple vehicles, and a convenient garage with a remote-controlled door. This property provides the potential to create an upper level and so increasing its future value considerably. Set against a backdrop of stunning views and offering ultimate privacy, this exceptional home is just minutes from Nueva Andalucía, San Pedro, and key road networks. Whether you're seeking tranquility or convenience, this residence delivers it all in style.



Spécification:

Caractéristiques

Terrasse privée

Salle de bain attenante

Double vitrage

Armoires ajustées

Barbecue

Fibre optique

Accès aux personnes à mobilité réduite

Vues

Panoramique

Piscine

Private

Jardin

Private

Entretien facile

Services publics

Eau potable

Téléphone

Chauffage de l'eau solaire

Orientation

Sud

Paramètre

De banlieue

Meubles

Non meublé

Sécurité

Stores électriques

Catégorie

Luxe

Revente

Climatisation

Climatisation

Cold A / C

A / C chaud

Condition

Excellent

Cuisine

Entièrement équipé

Parking

Garage

Private