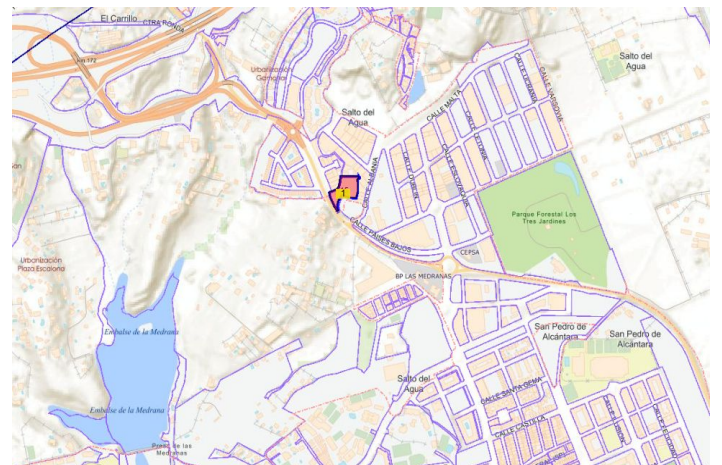
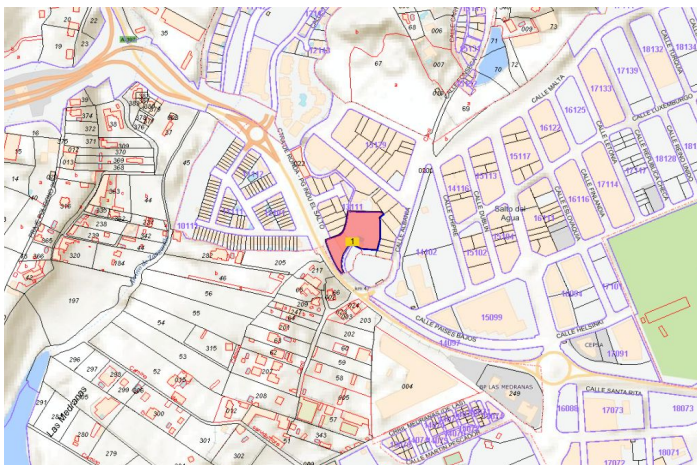
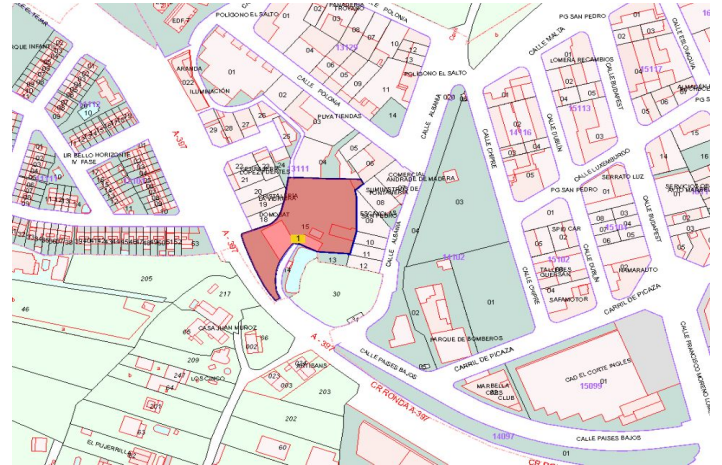
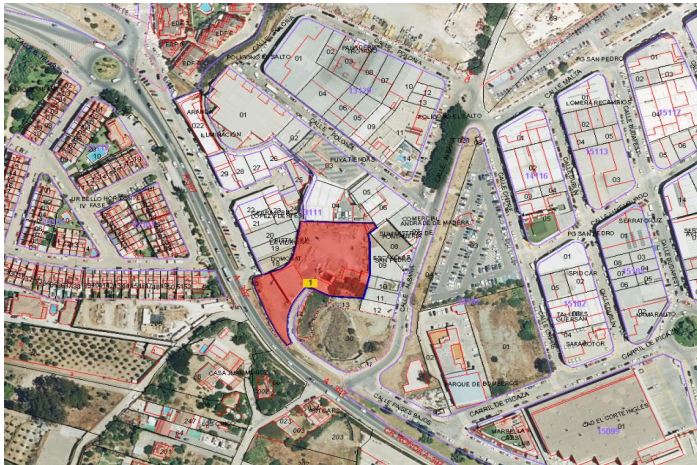


# Land for sale in San Pedro de Alcántara, Marbella

4,775,000 €

Reference: R4909192 Plot Size: 4,320m<sup>2</sup> Build Size: 543m<sup>2</sup>





---

## Costa del Sol, San Pedro de Alcántara

Discover this industrial plot of 4,320 m<sup>2</sup>, a unique opportunity for investors and promoters looking for a space with high potential in one of the most consolidated and strategic industrial areas of Marbella.

### Land characteristics

- Total surface: 4,320 m<sup>2</sup>.
- Current Constructions: Includes two already built industrial ships that add 543 m<sup>2</sup>, ideal for immediate use or as a basis for future projects.
- Versatile Development: Perfect space for building ships, industrial premises or large surfaces, with several development proposals underway.
- Strategic Location: Easy access to the main roads and highways, connecting directly to other polygons, shopping areas and downtown San Pedro.
- Partial Views: Once built, the land offers sea and city views.

### La Zona: San Pedro de Alcántara, Marbella

San Pedro de Alcántara is a dynamic and constantly growing town located in the heart of the Costa del Sol. The Polígono Salto del Agua is an expanding area known for its commercial and industrial activity.

Its strategic location makes it a reference point, with proximity to:

- Main roads: Quick access to the Mediterranean Highway (A-7) and the AP-7.
- Commercial area: Surrounded by established businesses and commercial areas, ideal for attracting customers and suppliers.
- Urban growth: An area with strong development and modernization projection.

This plot represents an exceptional opportunity for those seeking to invest in a consolidated area but with space for growth. Whether for the construction of industrial ships, commercial premises or even as the headquarters of large companies, this land meets all the necessary conditions for success.

Contact us today for more information and details about this project in San Pedro de Alcántara.

Don't miss this unique opportunity!



## Features:

### Features

Near Transport

### Orientation

South East

### Views

Mountain

Country

### Setting

Close To Golf

Close To Shops

Close To Town

Close To Schools