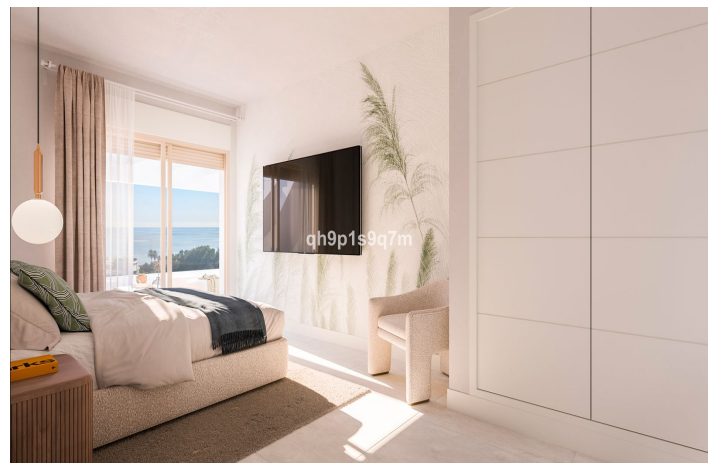
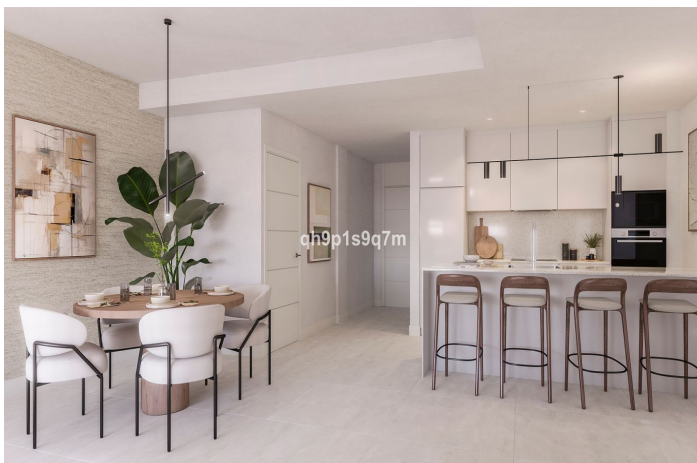
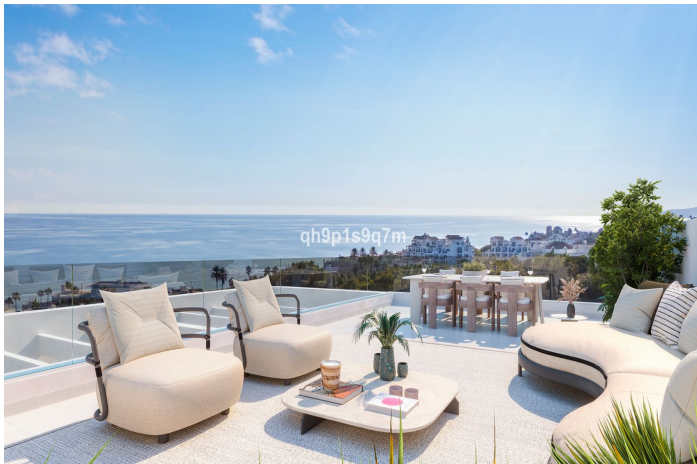




Ground Floor Apartment for sale in Estepona, Estepona 530,000 - 890,000 €

Reference: R4922596 Bedrooms: 2 - 3 Bathrooms: 2 - 2 Build Size: 92m² - 141m² Terrace: 20m² - 93m²





Costa del Sol, Estepona

An exclusive promotion of 25 units (1 to 3 bedrooms) in one of the expanding areas of Estepona. Located just minutes from the best beaches and offering access to a wide range of services, this opportunity perfectly combines nature and modernity.

This development is situated in the western area of Estepona, just a few kilometers from the town center, and located next to the peaceful Arroyo Enmedio neighborhood. This area stands out for its proximity to the serene and spacious beaches of Arroyo Vaquero and its remarkable urban development in recent years, currently being one of the fastest-growing areas on the Costa del Sol.

All the units in this development have been designed for those seeking a home that combines luxury and functionality. The spacious rooms are carefully distributed to offer comfort and versatility, making every corner a perfect place to relax and enjoy. Its strategic orientation ensures that all homes make the most of natural light and the stunning open sea views.

The high-quality materials selected for each unit enhance their exclusive character. The large-format porcelain floors not only provide elegance but also durability and easy maintenance, ideal for everyday living. The large windows, in addition to offering panoramic views, allow natural light to flood the interiors throughout the day, creating a warm and welcoming atmosphere that adapts perfectly to every moment.

The lifestyle in this development extends outdoors thanks to its generous terraces and solariums. These spaces have been designed to become the heart of each home, ideal for gatherings with friends, outdoor dining, or simply enjoying the tranquility of the surroundings while the sun sets on the horizon.



Features:

Features

Covered Terrace
Lift
Private Terrace
Storage Room
Double Glazing
Fitted Wardrobes
Solarium
Gym

Views

Sea
Panoramic
Garden
Pool

Pool

Communal

Security

Gated Complex
Alarm System
Entry Phone

Orientation

South East
North East

Setting

Close To Sea
Close To Shops
Close To Marina

Kitchen

Fully Fitted
Kitchen-Lounge

Parking

Garage
Communal

Climate Control

Cold A/C
Hot A/C

Condition

New Construction

Garden

Communal
Landscaped

Category

New Development