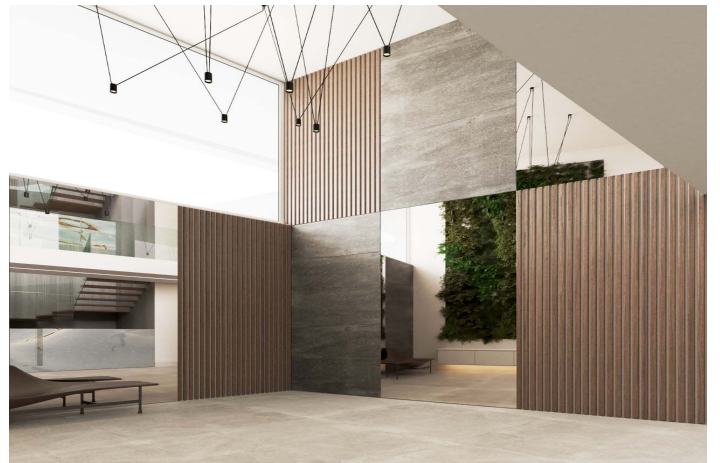




Detached Villa for sale in Altea, Altea

5,900,000 €

Reference: R4932490 Bedrooms: 5 Bathrooms: 6 Plot Size: 1,560m² Build Size: 470m²





Costa Blanca North, Altea

The villa features ultra-modern architecture. Every room, bathroom, living room, dining room, and kitchen offers panoramic views of the Mediterranean Sea, Altea, and Benidorm. The house spans three floors connected by a glass elevator and an impressive staircase.

Level 1 includes a two-car garage, a walk-in closet, a laundry room, and a large storage space.

Level 2 features four spacious bedrooms, each with an ensuite bathroom and built-in wardrobes. Every bathroom and bedroom has floor-to-ceiling glass walls. Each bedroom is furnished with a large double bed.

Level 3 houses the master bedroom, which includes two large walk-in closets, a bathroom with a shower and bathtub, and a separate toilet. The living room is connected to the dining area and the kitchen, behind which there is a large pantry. All rooms on this level feature expansive glass walls. The foyer also has a guest bathroom.

Outside, there is a massive terrace covering approximately 300 m² and an infinity pool of 50 m² (dimensions: 4.4 m x 11.3 m, depth: 1.3 m). On the terrace next to the kitchen, there is a covered barbecue area.

Each bathroom is equipped with a bidet, and four bathrooms also include a urinal. All rooms and bathrooms have sun-blocking blinds that still allow enjoyment of the magnificent views throughout the day. Each bathroom is additionally equipped with full blackout blinds to ensure complete privacy when the lights are on.

The entire house is equipped with a KNX smart electrical system.

All the house's windows face south.

The home is also equipped with a photovoltaic system that provides free electricity during the day for over 300 sunny days a year on the Costa del Sol.



Features:

Features

Covered Terrace
Lift
Private Terrace
Storage Room
Ensuite Bathroom
Fitted Wardrobes
Utility Room
Barbeque

Views

Sea
Panoramic
Pool

Pool

Private

Parking

Garage
Private
More Than One

Orientation

South

Setting

Close To Shops
Close To Town

Kitchen

Fully Fitted
Kitchen-Lounge

Utilities

Photovoltaic solar panels

Climate Control

Pre Installed A/C

Condition

New Construction

Garden

Private

Category

New Development