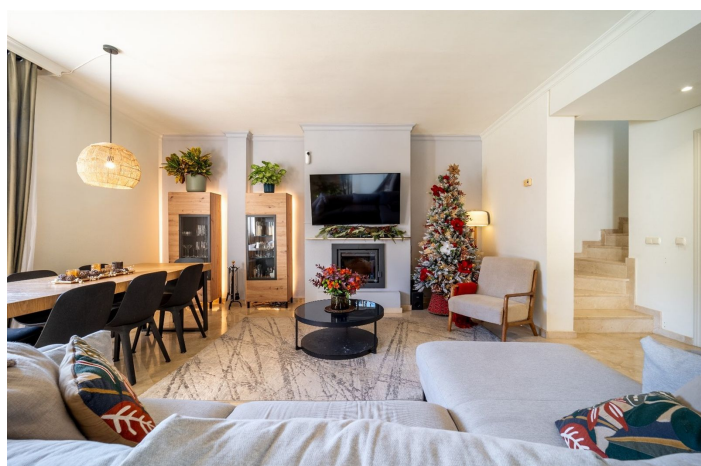




Duplex for sale in La Quinta, Marbella

583,500 €

Reference: R4915177 Bedrooms: 3 Bathrooms: 2 Plot Size: 1m² Build Size: 131m² Terrace: 45m²





Costa del Sol, La Quinta

Step into this well kept two level, 3 bedroom, 2.5 bathroom duplex apartment in the exclusive La Quinta area of Benahavis, a true gem offering comfort, privacy, but still with scope for improvement. This well established, gated urbanisation is frontline golf and is ideally located surrounded by golf courses, close to schools and amenities and only a few minutes drive into both San Pedro Town and Benahavis Village. The well maintained communal gardens, and the beautiful pool, are shared by only 36 properties making this a true oasis. The lower floor of the house features a large bright living room and separate kitchen. It opens up onto a spacious, partially covered terrace overlooking the golf course and the well maintained communal gardens. There is parking right outside the front door for easy access. A convenient guest toilet completes the ground floor. Upstairs, you will find three bright bedrooms each with a balcony. The master bedroom is extremely spacious with views across the gardens and golf and boasts an en-suite bathroom. The other two bedrooms share a family bathroom. Situated in a sought-after location, this home is surrounded by exclusive golf courses and multi million euro villas. Malaga airport is only 35 minutes away and, from this property, you can have the best of Marbella's vibrant lifestyle at your fingertips while still enjoying the quiet serenity of this exclusive neighbourhood.



Features:

Features

Covered Terrace
Private Terrace
Ensuite Bathroom
Double Glazing
Fitted Wardrobes

Views

Garden
Golf

Pool

Communal

Garden

Communal

Utilities

Electricity

Orientation

East

Setting

Close To Golf
Urbanisation
Frontline Golf

Furniture

Optional

Security

Gated Complex

Category

Holiday Homes
Investment
Resale

Climate Control

Air Conditioning
Cold A/C
Hot A/C

Condition

Excellent

Kitchen

Fully Fitted

Parking

Private