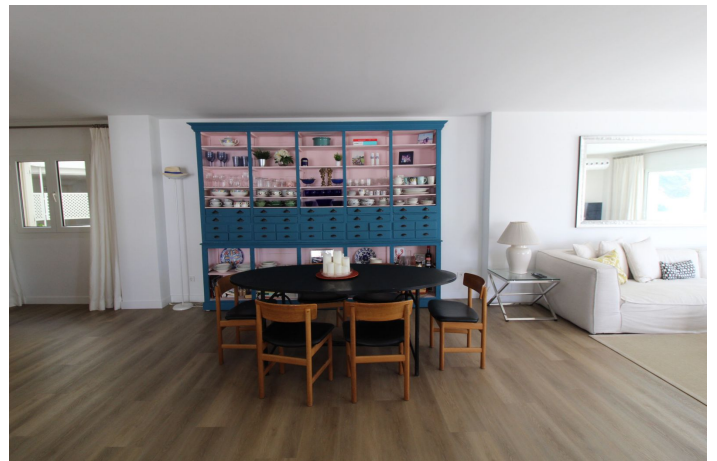




Middle Floor Apartment for sale in Puerto Banús, Marbella

1.480.000 €

Referenz: R4868281 Schlafzimmer: 2 Badezimmer: 2 Garten: 180m²





Costa del Sol, Puerto Banús

Amazing apartment ready to move in, with a lot of light all day as it makes corner to the south west; it is located in Puerto Banus in the Prestigious Urbanisation Playas del Duque, with direct access to the beach and the promenade; it has huge tropical gardens of 3 hectares with ponds as well as several salt water pools for children and adults.

In the spectacular gardens there are two private restaurants for the owners of the Urbanisation.

It consists of 2 bedrooms and 2 bathrooms and a studio; and it can easily be converted into three bedrooms as it is all very spacious. From the living room you access 2 large terraces both overlooking the sea and the communal garden.

Another room has a large covered and closed terrace that can be used as an office or playground for children. It consists of a large open plan kitchen with spectacular and integrated islet in the living room.

It is ideal to live all year and also supposes a fantastic investment if you want to get good profitability in rents;

The urbanization of Lujo is closed and has 24h security. includes a parking space. This is one of the most spectacular homes for sale in Playas del Duque, since it is located in the Central and South Building with regard to the gardens.

Puerto Banus is located a walk from this wonderful house: Playa, Corte Ingles, Supermarkets etc... do not miss this opportunity and call us.



Eigenschaften:

Merkmale

Überdachte Terrasse
Aufzug
In der Nähe des Transports
Badezimmer
Doppelverglasung
Einstellungsschränke

Ansichten

Meer
Panorama
Garten
Pool

Pool

Gemeinschaft

Garten

Gemeinschaft

Kategorie

Strand
Luxus

Orientierung

Südwesten

Einstellung

Strand
Urbanisierung
In der Nähe von Geschäften
In der Nähe der Stadt
In der Nähe von Schulen
Strand
Front Line Beach Complex

Möbel

Nicht eingerichtet
Optional

Sicherheit

Gated Complex
24 -Stunden -Sicherheit
Eingabetelefon

Energiebewertung

E

Klimakontrolle

Klimaanlage
Kalte a/c
Heiße A/C.

Zustand

Exzellent
Kürzlich renoviert

Küche

Teilweise montiert

Parken

Privat

CO2 -Emissionsbewertung

E