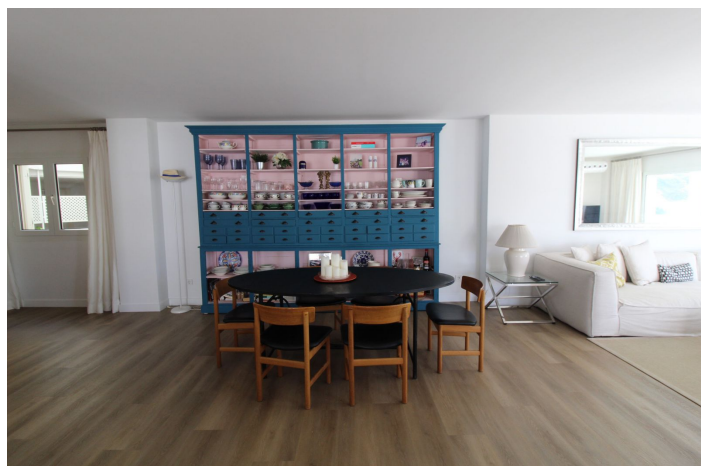




Middle Floor Apartment for sale in Puerto Banús, Marbella

1 480 000 €

Référence: R4868281 Chambres: 2 Bain: 2 Construite: 180m²





Costa del Sol, Puerto Banús

Amazing apartment ready to move in, with a lot of light all day as it makes corner to the south west; it is located in Puerto Banus in the Prestigious Urbanisation Playas del Duque, with direct access to the beach and the promenade; it has huge tropical gardens of 3 hectares with ponds as well as several salt water pools for children and adults.

In the spectacular gardens there are two private restaurants for the owners of the Urbanisation.

It consists of 2 bedrooms and 2 bathrooms and a studio; and it can easily be converted into three bedrooms as it is all very spacious. From the living room you access 2 large terraces both overlooking the sea and the communal garden.

Another room has a large covered and closed terrace that can be used as an office or playground for children. It consists of a large open plan kitchen with spectacular and integrated islet in the living room.

It is ideal to live all year and also supposes a fantastic investment if you want to get good profitability in rents;

The urbanization of Lujo is closed and has 24h security. includes a parking space. This is one of the most spectacular homes for sale in Playas del Duque, since it is located in the Central and South Building with regard to the gardens.

Puerto Banus is located a walk from this wonderful house: Playa, Corte Ingles, Supermarkets etc... do not miss this opportunity and call us.



Spécification:

Caractéristiques

Terrasse couverte
Ascenseur
Près du transport
Salle de bain attenante
Double vitrage
Armoires ajustées

Vues

Mer
Panoramique
Jardin
Piscine

Piscine

Communautaire

Jardin

Communautaire

Catégorie

En bord de mer
Luxe

Orientation

Sud-ouest

Paramètre

En bord de mer
Urbanisation
Proche des magasins
Près de la ville
Près des écoles
En bord de mer
Complexe de plage de première ligne

Meubles

Non meublé
Optional

Sécurité

Complexe fermé
Sécurité 24 heures
Téléphone d'entrée

Cote d'énergie

E

Climatisation

Climatisation
Cold A / C
A / C chaud

Condition

Excellent
Récemment rénové

Cuisine

Partiellement ajusté

Parking

Private

Cote d'émission de CO2

E