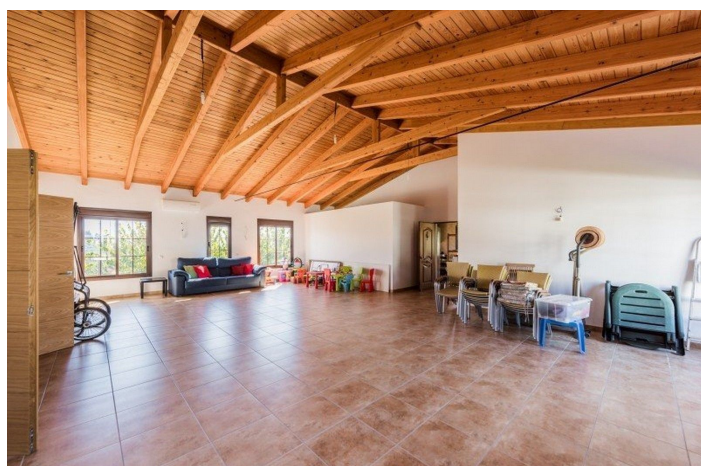
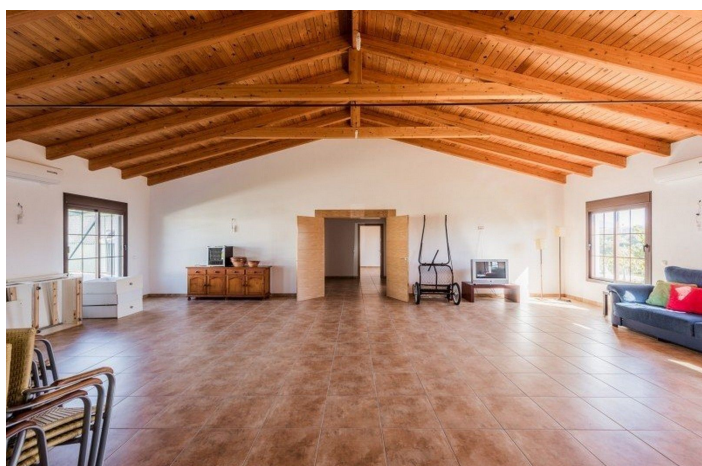




Detached Villa for sale in Estepona, Estepona

899,000 €

Reference: R3302554 Bedrooms: 3 Bathrooms: 2 Plot Size: 10,000m² Build Size: 265m² Terrace: 60m²





Costa del Sol, Estepona

Discover your dream home in the serene surroundings of Estepona!

This beautifully detached villa offers an unparalleled living experience with its high level of finishing and breathtaking views over the sea and mountains. Nestled in a quiet area, this property boasts a large south-facing terrace where you can soak in panoramic sea views, perfect for those tranquil mornings or entertaining evenings.

The villa is surrounded by a lush garden filled with fruit trees, providing a natural oasis right at your doorstep. Completely rebuilt using exquisite materials, the home features high, beamed ceilings that add a touch of rustic elegance. The spacious sitting room with a cozy fireplace flows seamlessly into a fully equipped kitchen, making it ideal for both relaxation and entertaining.

With 265 m² of constructed space, the villa includes three spacious bedrooms and two well-appointed bathrooms. The master bathroom features a modern shower and ample storage rooms. Double glazed windows and electric blinds ensure comfort and energy efficiency throughout the year. Additionally, there is plenty of space for customization, whether you envision a larger sitting room or additional bedrooms.

Convenience is key, as this property is just a 5-minute drive from the beach and local shops, and only 10 minutes from the vibrant towns of Estepona or San Pedro de Alc ntara. The villa also includes fitted wardrobes, a storeroom, air conditioning with a heat pump, and parking space. With an expansive plot of 10,000 m², this second-hand property is in excellent condition and ready for you to move in.

Don't miss out on this unique opportunity to own a piece of paradise in Estepona. Contact us today to schedule a viewing!



Features:

Features

Covered Terrace
Private Terrace
Storage Room
Double Glazing
Fitted Wardrobes

Views

Sea
Panoramic

Furniture

Optional

Utilities

Electricity
Drinkable Water

Orientation

South

Setting

Close To Port
Close To Sea
Close To Shops
Close To Town
Close To Schools

Kitchen

Fully Fitted

Category

Luxury
Resale

Climate Control

Fireplace

Condition

Excellent

Parking

Private
Open