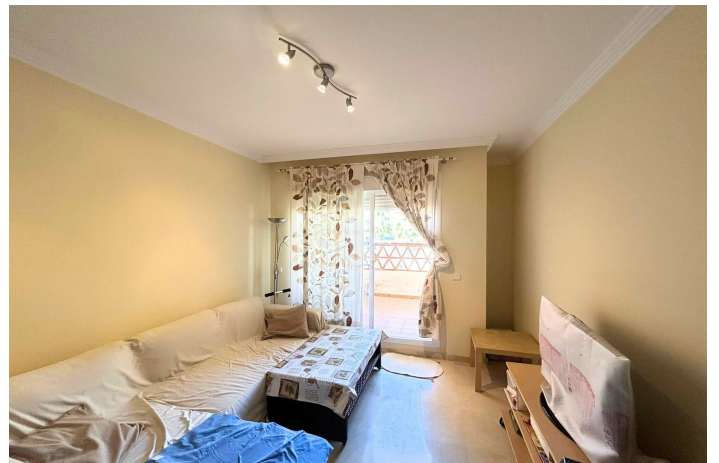




Middle Floor Apartment for sale in Benalmádena, Benalmádena

325 500 €

Référence: R4994662 Chambres: 2 Bain: 2 Construite: 80m²





Costa del Sol, Benalmádena

We present this wonderful penthouse in one of the most sought-after developments on the Costa del Sol. With 2 bedrooms, 2 bathrooms, and a total area of 80 m², this home offers a perfect atmosphere of comfort and tranquility. It is the ideal choice for families, couples, or investors looking for a special place. Apartment details: 2 spacious and bright bedrooms: Rooms designed to offer you comfort and privacy. 2 modern bathrooms: With high-quality finishes for your greater well-being. 80 m² of space: Perfect for enjoying life with everything you need. 2 parking spaces within the community. Common areas and services: Community pool: Relax and refresh in the pool surrounded by beautiful gardens. Private golf course: For golf enthusiasts, you can practice your favorite sport just a few steps away. Tennis and paddle tennis facilities: Stay active with excellent sports options. Safe and quiet residential environment: Enjoy a relaxed setting, perfect for the family. Excellent location and good connectivity: Public transport nearby: Easy access to major routes and transportation, facilitating your travels. Close to the Bil Bil Club: An ideal social and sports space, just minutes from your home. Services at your reach: Nearby health centers and hospitals: Quality medical care just a few steps away. Schools and colleges: The best education for your children, just a few minutes from home. Shops and restaurants: A wide range of shops, supermarkets, and restaurants, everything you need at your fingertips. Living in Arenal Golf gives you the opportunity to reside in one of the most exclusive areas of the Costa del Sol. Arenal Golf: A place where luxury and comfort meet.



Spécification:

Caractéristiques

Ascenseur
Armoires ajustées
Wifi

Vues

Montagne
Piscine

Piscine

Communautaire

Jardin

Communautaire

Services publics

Électricité
Eau potable

Orientation

Est

Paramètre

Près du golf
Urbanisation

Meubles

Entièrement meublé

Sécurité

Safe

Climatisation

Chauffage central

Condition

Bien

Cuisine

Partiellement ajusté

Parking

Souterrain
Garage
Private