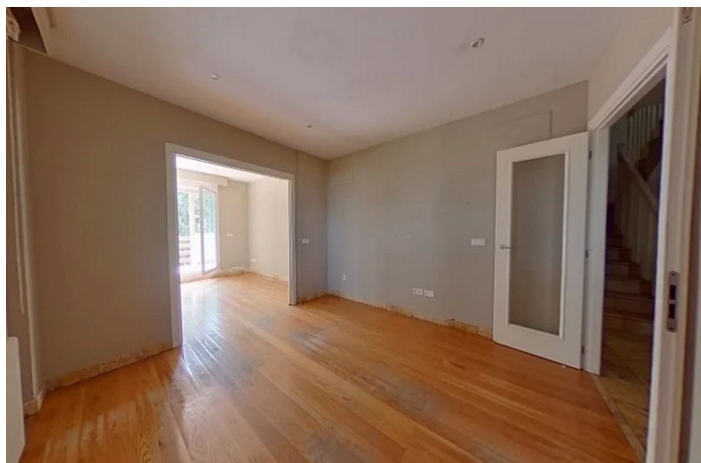




Townhouse for sale in Manilva, Manilva

363,400 €

Reference: R5013580 Bedrooms: 5 Bathrooms: 4 Build Size: 300m²





Costa del Sol, Manilva

We present this magnificent single-family home located in the prestigious Vistalmar Duquesa Norte development, in the municipality of Manilva (Málaga), an area that combines tranquility, nature, and proximity to all amenities.

The property is built on a generous 396.84 m² plot and has a total constructed area of 300 m² spread over four floors. Its spacious and bright rooms offer a comfortable, functional space designed for comfort and privacy.

- On the ground floor, you will find two bedrooms, a full bathroom, and additional storage space.
- The mezzanine houses several living rooms, a fully furnished kitchen, a bathroom, and a large terrace, ideal for family gatherings or relaxing moments.
- The first floor has three additional bedrooms and two full bathrooms, providing an intimate and cozy space for the whole family.
- On the upper floor, the viewing tower offers a laundry room and a spectacular sun terrace with stunning sea views, perfect for enjoying the privileged climate of the Costa del Sol.

Furthermore, the development offers several communal pools, extensive garden areas, and a peaceful setting with easy access to beaches, golf courses, shops, and services.

Townhouse, Manilva, Costa del Sol.
5 Bedrooms, 4 Bathrooms, Built 300 m².

Setting : Close To Forest, Urbanisation.

Orientation : South.

Condition : Good.

Pool : Communal.

Climate Control : Central Heating.

Views : Sea, Mountain, Country, Panoramic.

Features : Fitted Wardrobes, Private Terrace, Storage Room, Utility Room.

Kitchen : Partially Fitted.

Garden : Communal.

Security : Gated Complex, Entry Phone.

Utilities : Electricity, Drinkable Water, Telephone.

Category : Bargain, Cheap, Distressed, Golf, Holiday Homes, Investment, Luxury, Repossession, Resale.



Features:

Features

Private Terrace
Storage Room
Fitted Wardrobes
Utility Room

Views

Sea
Mountain
Panoramic
Country

Pool

Communal

Security

Gated Complex
Entry Phone

Orientation

South

Setting

Urbanisation
Close To Forest

Kitchen

Partially Fitted

Utilities

Electricity
Drinkable Water
Telephone

Climate Control

Central Heating

Condition

Good

Garden

Communal

Category

Holiday Homes
Investment
Bargain
Cheap
Distressed
Golf
Luxury
Repossession
Resale