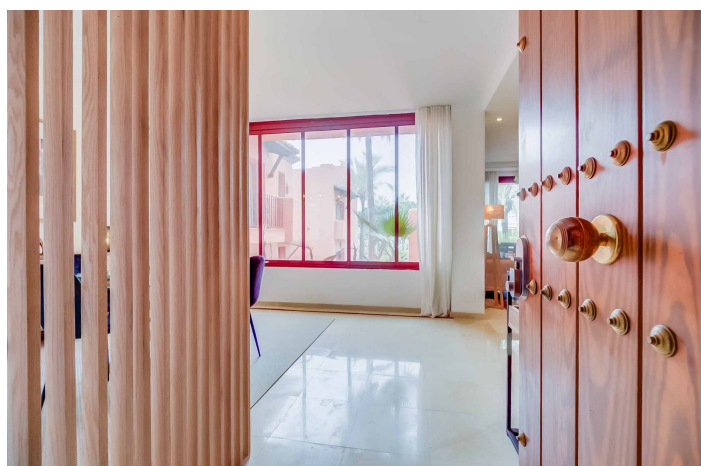
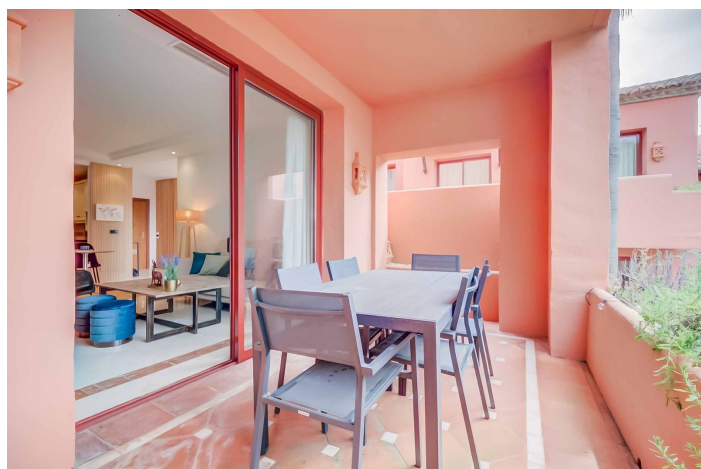




Middle Floor Apartment for sale in Marbella, Marbella

599 000 €

Référence: R5013571 Chambres: 3 Bain: 2 Construite: 122m² Terrasse: 9m²





Costa del Sol, Marbella

Live the Luxury of Beachfront Living – Featured Apartment in Romana Playa, Marbella We present you with a unique opportunity to acquire one of the most attractive apartments in the prestigious Jardines de Don Carlos complex, located in the sought-after area of Elviria, Marbella. Boasting a privileged frontline beach location, this 122m² property perfectly blends spaciousness, elegance, and an exclusive atmosphere. The apartment features 3 double bedrooms, 2 bathrooms, a fully equipped kitchen, and high-quality finishes such as marble floors and well-crafted woodwork. Its private terrace invites you to enjoy the sun and sea breeze all year round, making it the perfect spot to relax or entertain. HIGHLIGHTS: -Best orientation and layout within the complex -Bright and spacious living areas -Air conditioning -Elevator -Gym, sauna, and impeccably maintained communal areas -Direct access to the beach from the complex -Communal pool surrounded by exotic gardens -Reinforced security door -Private storage room -Parking space included -Close to all amenities: supermarkets, schools, hospitals, restaurants, golf courses... Located in a gated and secure community, this apartment is not only ideal as a permanent residence but also represents an excellent investment opportunity in an area with high demand for holiday rentals. Exclusivity, location, and comfort... all in one property. Our agent fees are included in the sale price. The price does not include costs associated with the purchase, such as notary, registration, and taxes related to the transfer (ITP, VAT, AJD). Furniture is not included in the price.



Spécification:

Caractéristiques

Terrasse couverte

Ascenseur

Près du transport

Terrasse privée

Salle de stockage

Sol en marbre

Armoires ajustées

Salle de sport

Buanderie

Paramètre

Zone commerciale

Urbanisation

Près de la mer

Près des écoles

Meubles

Entièrement meublé

Sécurité

Complexe fermé

Cote d'émission de CO2

G

Orientation

Sud-ouest

Condition

Bien

Cuisine

Entièrement équipé

Parking

Souterrain

Private

Vues

Panoramique

Jardin

Urban

Piscine

Communautaire

Jardin

Communautaire

Cote d'énergie

G