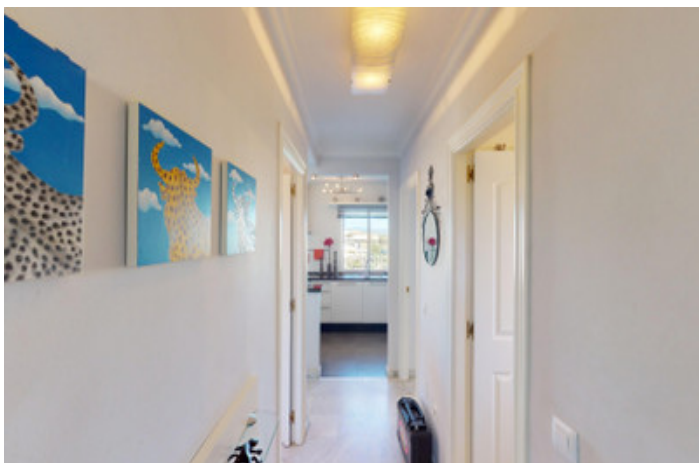




Penthouse for sale in Mezquitilla, Velez-Málaga

349,000 €

Reference: R5007871 Bedrooms: 2 Bathrooms: 1 Plot Size: 98m² Build Size: 98m²





Costa del Sol East, Mezquitilla

Welcome to this charming penthouse in the coastal village of Mezquitilla, a perfect blend of comfort, functionality, and Mediterranean lifestyle. This well-designed apartment stands out with two private terraces, both offering lovely sea views and plenty of space to relax, dine, or entertain outdoors. The bright and airy living room flows seamlessly into the kitchen and opens directly onto one of the terraces, creating a wonderful indoor-outdoor feel. One of the two bedrooms also has direct access to the terrace, bringing in plenty of natural light and sea breezes. Both bedrooms are equipped with built-in wardrobes, and the entire apartment benefits from air conditioning for year-round comfort. The kitchen is compact yet stylish, featuring sleek white cabinetry, black countertops, and stainless steel appliances. The open-plan layout and thoughtfully chosen décor with warm tones and pops of color create a welcoming and contemporary atmosphere. The bathroom is modern and well-appointed, offering a combination bathtub and shower, a vessel sink, and quality fixtures that make the space both functional and pleasant. A private parking space and a separate storage room offer added convenience, and the well-kept community includes a shared pool, ideal for a refreshing dip on warm days. Located just a short stroll from the beach, local restaurants, shops, and other amenities, this penthouse is ideal for those looking for a full-time residence, a relaxing holiday home, or a solid investment on the sunny coast. We are pleased to be able to present this dream property to you soon, either personally or via virtual viewing. Because this world is unique - just like our Axarquía. In Andalusia. On the Costa del Sol. Here, on the sunny side of life...



Features:

Features

Lift

Storage Room

Double Glazing

Fitted Wardrobes

Views

Sea

Orientation

South East

Climate Control

Air Conditioning

Setting

Close To Golf

Close To Port

Close To Sea

Close To Shops

Close To Schools

Close To Marina

Condition

Good

Pool

Communal

Kitchen

Partially Fitted

Garden

Communal

Parking

Open