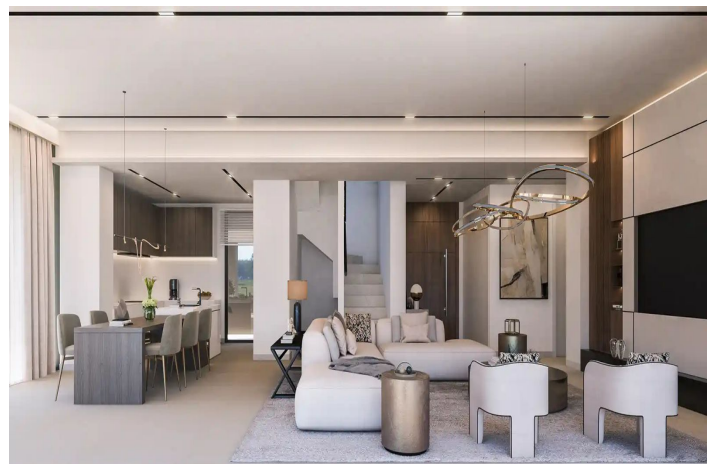
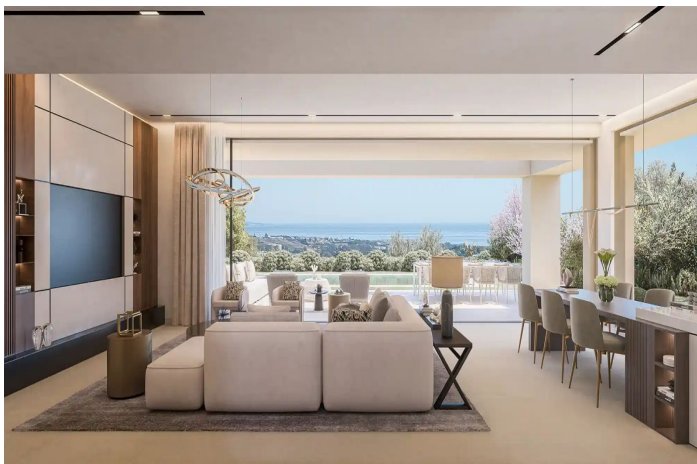




Detached Villa for sale in Benahavís, Benahavís

2,250,000 -**2,750,000 €****Reference:** R5015632 **Bedrooms:** 3 - 5 **Bathrooms:** 3 - 4 **Plot Size:** 584m² - 772m² **Build Size:** 213m² - 371m²**Terrace:** 55m² - 137m²



Costa del Sol, Benahavís

This residential is a gated, villa community nestled in the hills located in lower Benahavis. Sitting within a triangle between Marbella, Estepona and the mountain village of Benahavis this unique development offers tranquility, stunning panoramic views and embraces the natural organic environment.

A unique project that offers a “lock and leave” villa concept with a community fee including 24 hour security, maintenance of the stunning grounds that house an abundance of Olive trees, exclusive use of the Club House including heated indoor pool, full equipped gym, office space and Sauna, and full maintenance of your private garden and pool.

Launched in 2021 the contemporary designed villas embrace the natural elements, designed to maximise the stunning views and with 7 villa designs to suit all needs, this development continues to be in high demand.

Built to the high standard, these villas blend contemporary open plan designed properties with seamless living enabling full enjoyment of the natural surrounds and stunning views offered.

This brand-new development, consists of modern and contemporary properties with organic and natural elements in keeping with the surroundings. Each villa comes with a verdant Mediterranean garden and a private pool. The development is located in the heart of Benahavís, only a few minutes away from Marbella and Estepona. It is one of the most exciting luxury residential project in many years.

All villas comes with a well-designed and open-plan concept including high ceilings and windows that allows the light to flood into the home.



Features:

Features

Private Terrace
Ensuite Bathroom
Double Glazing
Fitted Wardrobes
Gym
Sauna
Utility Room
Basement

Setting

Close To Golf
Close To Town

Kitchen

Fully Fitted
Kitchen-Lounge

Parking

Private
Open

Climate Control

Cold A/C
Hot A/C
U/F Heating
U/F/H Bathrooms

Condition

New Construction

Garden

Communal
Private
Landscaped

Category

New Development

Views

Sea
Mountain
Panoramic
Pool

Pool

Communal
Heated
Indoor
Private

Security

Gated Complex
24 Hour Security