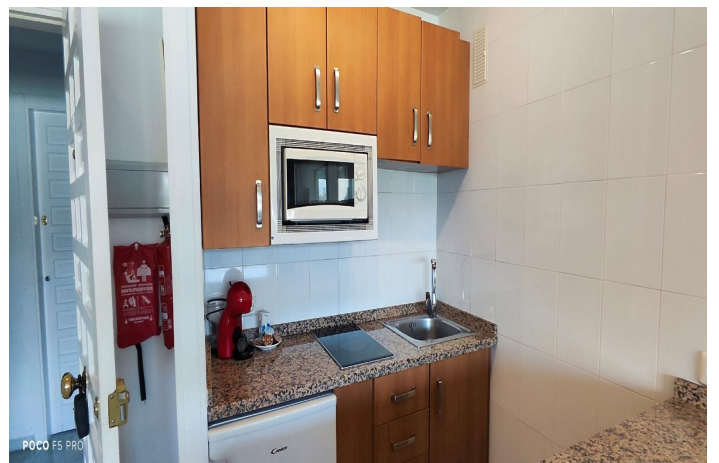




Apartment for sale in Benalmadena Costa, Benalmádena

229.900 €

Referenz: R5020321 Schlafzimmer: 1 Badezimmer: 1 Garten: 45m²





Costa del Sol, Benalmadena Costa

Unique opportunity in Benal Beach

The best investment in Benalmádena with great profitability

This attractive 45 m² apartment is offered in one of the most recognized and highly valued residential areas on the Costa del Sol: Benal Beach. This strategic location, just a five-minute walk from Bil Bil Beach and the Benalmádena seafront promenade, makes it an excellent option both as a holiday home and as a tourist rental.

The apartment has one bedroom with a built-in wardrobe, a living room with a sofa bed, a fully furnished and equipped open-plan kitchen, a full bathroom with a shower, and a pleasant terrace with views of La Paloma Park.

The Benal Beach development offers a unique setting with one of the most impressive communal pool complexes on the Costa del Sol. It features four interconnected pools with slides and a water mountain, one of which is heated, large green areas, year-round lifeguards, and access control via wristbands.

The complex is fully gated, with communal parking, a 24-hour reception, and video surveillance throughout the building. Within the complex, there is also a supermarket, restaurant, cafeteria, fashion store, and private gym.

In the immediate vicinity, there is a taxi and bus stop, a pharmacy, supermarkets, cafeterias, and restaurants. Directly opposite the complex are the famous La Paloma Park and the Selwo Marina theme park.

In compliance with Decree 218/2005, of October 11, which approves the regulation on consumer information regarding the purchase and sale of homes in Andalusia, the client is informed that notary fees, registry fees, property transfer tax, financial intermediation fees, and other expenses inherent to the purchase and sale are not included in the price. Real estate agency fees are included.



Eigenschaften:

Merkmale

Überdachte Terrasse

Aufzug

In der Nähe des Transports

Private Terrasse

Einstellungsschränke

W-lan

Zugang für Menschen mit reduzierter

Mobilität

Ansichten

Meer

Berg

Pool

Hafen

Orientierung

Nordosten

Klimakontrolle

Klimaanlage

Einstellung

Gewerbegebiet

In der Nähe von Golf

In der Nähe des Hafens

Urbanisierung

In der Nähe des Meeres

In der Nähe von Geschäften

In der Nähe der Stadt

In der Nähe von Schulen

Strand

Hafen

Yachthafen

In der Nähe von Marina

Front Line Beach Complex

Pool

Gemeinschaft

Möbel

Teil eingerichtet

Parken

Gemeinschaft

Küche

Voll ausgestattet

Kategorie

Reduziert

Ferienhäuser

Investition

Schnäppchen

Strand

Billig

Zeitgenössisch

Garten

Gemeinschaft