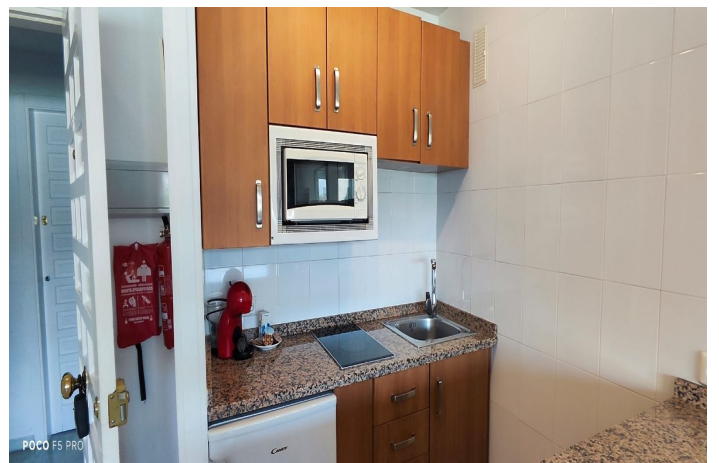




Apartment for sale in Benalmadena Costa, Benalmádena

229,900 €Reference: R5020321 Bedrooms: 1 Bathrooms: 1 Build Size: 45m²



Costa del Sol, Benalmadena Costa

Unique opportunity in Benal Beach

The best investment in Benalmádena with great profitability

This attractive 45 m² apartment is offered in one of the most recognized and highly valued residential areas on the Costa del Sol: Benal Beach. This strategic location, just a five-minute walk from Bil Bil Beach and the Benalmádena seafront promenade, makes it an excellent option both as a holiday home and as a tourist rental.

The apartment has one bedroom with a built-in wardrobe, a living room with a sofa bed, a fully furnished and equipped open-plan kitchen, a full bathroom with a shower, and a pleasant terrace with views of La Paloma Park.

The Benal Beach development offers a unique setting with one of the most impressive communal pool complexes on the Costa del Sol. It features four interconnected pools with slides and a water mountain, one of which is heated, large green areas, year-round lifeguards, and access control via wristbands.

The complex is fully gated, with communal parking, a 24-hour reception, and video surveillance throughout the building. Within the complex, there is also a supermarket, restaurant, cafeteria, fashion store, and private gym.

In the immediate vicinity, there is a taxi and bus stop, a pharmacy, supermarkets, cafeterias, and restaurants. Directly opposite the complex are the famous La Paloma Park and the Selwo Marina theme park.

In compliance with Decree 218/2005, of October 11, which approves the regulation on consumer information regarding the purchase and sale of homes in Andalusia, the client is informed that notary fees, registry fees, property transfer tax, financial intermediation fees, and other expenses inherent to the purchase and sale are not included in the price. Real estate agency fees are included.



Features:

Features

Covered Terrace

Lift

Near Transport

Private Terrace

Fitted Wardrobes

WiFi

Access for people with reduced mobility

Views

Sea

Mountain

Pool

Port

Orientation

North East

Climate Control

Air Conditioning

Setting

Commercial Area

Close To Golf

Close To Port

Urbanisation

Close To Sea

Close To Shops

Close To Town

Close To Schools

Beachfront

Port

Marina

Close To Marina

Front Line Beach Complex

Pool

Communal

Furniture

Part Furnished

Parking

Communal

Kitchen

Fully Fitted

Category

Reduced

Holiday Homes

Investment

Bargain

Beachfront

Cheap

Contemporary

Garden

Communal