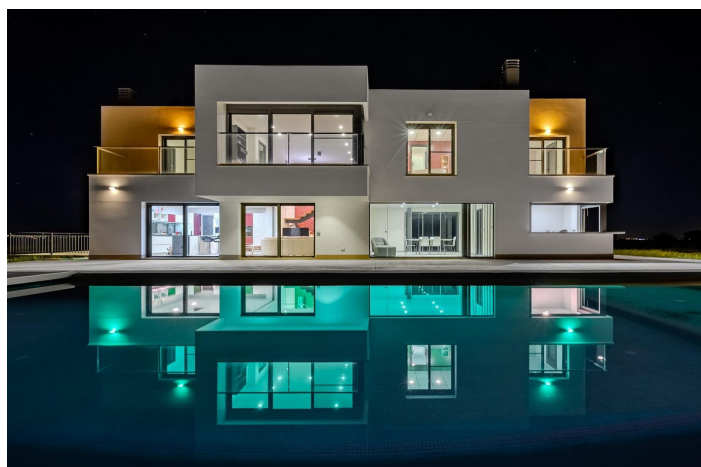




Apartment for sale in La Marina, Elche

1.150.000 €

Referentie: R5021680 Slaapkamers: 5 Badkamers: 4 Plotgrootte: 10.602m² Perceelgrootte: 506m²





Costa Blanca South, La Marina

Nestled in La Marina del Pinet (Elche, southern Alicante), this stunning contemporary-style villa was built in 2016 on an expansive 10,600 m² plot, offering absolute tranquility and privacy. With optimal sun exposure throughout the day, it boasts 360° panoramic views of the countryside and surrounding mountains.~Its strategic location ensures excellent connectivity: just 5 km from the beach, 3 km from La Marina village, 20 km from Elche and Torrevieja, and 25 km from Alicante Airport.~A home designed for limitless living and enjoyment.~Built with top-quality materials and no detail spared, this exceptional property delivers superior levels of comfort, security, and functionality:~Anti-theft security windows~Electric blinds and mosquito screens throughout~Premium appliances and designer kitchen~Full accessibility: elevator from basement to first floor, ramps, wide and sliding doors~Natural light, open-plan design, and stunning views.~The south-facing façade, which opens toward the pool, features expansive windows that fill the interior with natural light.~On the main floor, a spacious fully equipped kitchen connects seamlessly to the open-concept living area. These spaces can be divided with elegant sliding glass doors for added versatility. The central island includes an induction cooktop and extends into a stylish table with seating for up to 12 guests. A laundry room with exterior access completes the space.~From the living room, a large covered terrace is accessed through a retractable glass door. Accordion-style windows open completely to the north and south, creating a seamless indoor-outdoor experience. The terrace leads to a storage room, a summer kitchen with bar and indoor barbecue, and an outdoor bathroom. Also on this level is a guest bedroom with en-suite bathroom and a separate guest toilet.~Private spaces designed for total relaxation.~Upstairs—accessible via elevator or stairs—you'll find a bright, open-plan room ideal as an office, games room, or gym.~From here, enter the luxurious primary suite featuring a fireplace, private terrace, large walk-in closet, and an expansive bathroom with a central freestanding tub, oversized shower, double vanity, and separate toilet.~Two additional bedrooms with en-suite bathrooms and private terraces are also located on this floor.~Multifunctional basement and dream garage.~The basement level offers a versatile room with a private bathroom—perfect as a fifth bedroom, home office, cinema, or fitness room.~The extra-large garage accommodates several cars, motorbikes, and bicycles, and houses the technical systems for the pool.~A year-round private wellness retreat.~The 12 x 6-meter pool includes a gradual beach-style entry, a deeper lap lane, and a UV purification system, allowing for nearly chlorine-free, healthy swimming.~The elevated 3 x 3-meter jacuzzi, overlooking the pool, creates a serene, zen-like setting.~A heat pump system ensures both the pool and jacuzzi can be enjoyed year-round. A solar-powered shower is located poolside.~Eco-efficiency and sustainability.~The rainwater and greywater collection and recycling system is fully operational and used to irrigate the gardens, trees, and lawn—an eco-conscious solution that enhances comfort while respecting the environment.~Property Layout:~Main floor: 168.40 m²~Upper floor: 125.55 m²~Basement: 186.30 m²~Are you ready to discover your future home?~A modern, private, and fully functional paradise, just minutes from the sea.~This is more than a property—it's a lifestyle.~Contact us today to schedule your private visit.~Your dream home is waiting!~



Kenmerken:

Extra's

Tillen

Privé Terras

Berging

Bijkeuken

Jacuzzi

Meubilering

Volledig gemeubileerd

Energiebeoordeling

D

Klimaatbeheersing

Airconditioning

Beveiliging

Alarmsysteem

CO2 Emission Rating

D

Zwembad

private Pool

Parkeergelegenheid

garage