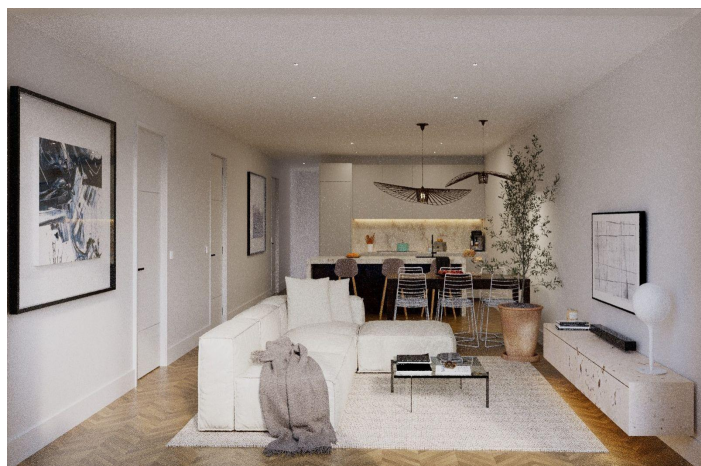
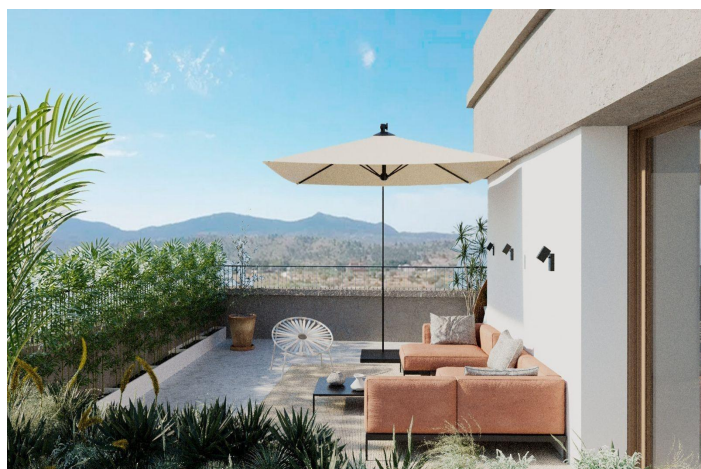




Apartment for sale in Hondón de las Nieves, Hondón de las Nieves

305,000 €

Reference: N8774 Bedrooms: 3 Bathrooms: 2 Build Size: 127m² Terrace: 38m²





Vinalopó Medio, Hondón de las Nieves

Exclusive New Build Apartments with Views of the Vineyards in Hondón de las Nieves

Modern Homes in a Unique Natural Setting

Discover this new development of flats in Hondón de las Nieves, a charming village set in a beautiful valley surrounded by olive and almond groves. This development offers 15 exclusive 2 and 3 bedroom homes, all designed to offer maximum comfort, energy efficiency and stunning views of the Vinalopó vineyards.

Located in Vinalopó Medio, this peaceful enclave is ideal for those seeking a relaxed Mediterranean lifestyle, with easy access to nature and all essential services.

High Quality Features and Modern Design

Each flat has been designed with top quality materials and a functional layout, offering:

- Spacious and open-plan living spaces, ideal for modern living.
 - Fully fitted kitchens with granite worktops.
 - Top of the range bathrooms with built-in cisterns and top quality sanitary ware.
 - Energy efficiency with aerothermal system for hot water.
 - Pre-installation of ducted air conditioning, guaranteeing comfort in all seasons.
 - Aluminium windows with double glazing, providing thermal and acoustic insulation.
 - Reinforced security entrance door for peace of mind.
 - Parking space and storage room in basement, included in the price.
 - Lift in the building, ensuring accessibility and comfort.
 - Solar panels on the rooftop to improve energy efficiency and reduce maintenance costs.
- In addition, the residential has a communal swimming pool, perfect for enjoying the Mediterranean climate.

Privileged location in Hondón de las Nieves

Hondón de las Nieves is a town with a great wine-growing tradition, famous for its table grapes with the Vinalopó denomination of origin. Surrounded by the Sierra de Crevillente, the area offers numerous hiking trails, natural areas and a rich cultural and historical offer.

From your new home, you will have quick access to the main points of interest in the area:

- Alicante Airport - 30 km (30 minutes by car).
- Alicante Beaches - 35 km (35 minutes by car)
- Elche - 20 km (20 minutes by car)
- Crevillente Natural Park - 10 km (15 minutes drive)
- Golf Courses - 25 km (30 minutes drive)

An Ideal Home on the Costa Blanca

Enjoy the tranquillity of the Hondón Valley, without giving up the proximity to Alicante and Elche. Whether as a permanent residence, holiday home or investment property, these modern flats are an unbeatable choice.

Contact us today for more information or to arrange a viewing.



Features:

Features

Parking - Space

Communal Pool

Gated

Number of Parking Spaces: 1

Near Schools

Double Bedrooms: 3

Air Conditioning: Pre-Installed

Elevator/Lift

Location: Rural, Urbanisation

Beach: 37000 Meters

Terrace: 38 Msq.

Useable Build Space: 107 Msq.

Energy Rating

B

CO2 Emission Rating

B