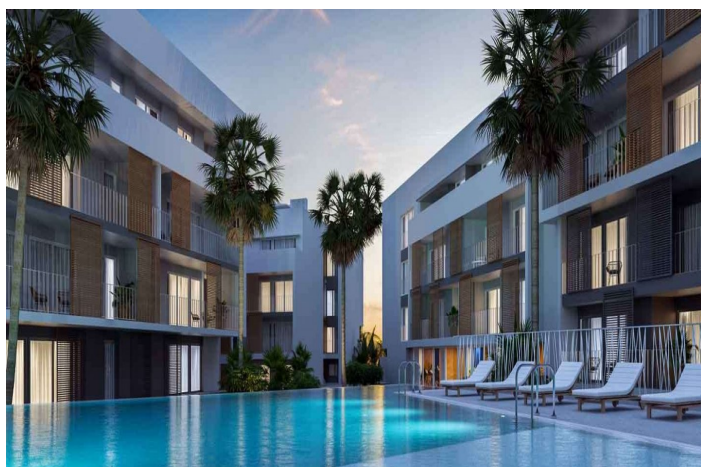




Apartment for sale in Javea, Javea

345,650 €

Reference: SP0057 Bedrooms: 2 Bathrooms: 2 Build Size: 97m² Terrace: 16m²


Bloque 2 Portal 3 P00-F



Superficies: Vivienda 2d

Superficie del interior 71,28 m²
Superficie del exterior 14,81 m²
Superficie construida interior 86,09 m²
Superficie construida exterior 20,02 m²



V03

Documentación informativa de carácter orientativo y no vinculante. No se garantiza la exactitud de los datos. La información contenida en este documento es meramente informativa y no constituye una oferta de venta. La información contenida en este documento es meramente informativa y no constituye una oferta de venta. La información contenida en este documento es meramente informativa y no constituye una oferta de venta.





Costa Blanca North, Javea

NEW RESIDENTIAL IN JAVEA 5 MINUTES FROM THE BEACH, THE PORT AND THE CENTER !!!

New residential a few minutes from the beach that consists of 58 homes with 2, 3 and 4 bedrooms distributed on the ground floor with a garden, apartments with terraces on intermediate floors, penthouses and duplexes with large terraces. The residential complex will have a swimming pool and a social club.

You can configure different aspects in the distribution, finishes and extra options of your home. Adapt your new home to your tastes and preferences and create the environment you have always wanted.

With interiors cared for in detail, the exterior of the house could not be less. Perfectly combining avant-garde trends and the timeless elegance of the most classic constructions, the beautiful aesthetic of the building lies in its façade through textures and colors integrated into its surroundings.

Enjoying your new home in a magnificent location, with everything you need at your fingertips: restaurants, pharmacies, supermarkets, health centers, and the Molins De La Plana, a green lung in Jávea. In addition, in the vicinity of your new construction home you will find the Jávea bus station and the CV-734 road for easy access.



Features:

Features

Gym

Beach: 800 Meters

Parking - Space

Near Trees

Near Commercial Center

Near bus route

Communal Pool

Gated

Number of Parking Spaces: 1

Useable Build Space: 65 Msq.

Near Schools

Terrace: 22 Msq.

Air Conditioning: Pre-Installed

Elevator/Lift

Location: Coastal, Urbanisation

Double Bedrooms: 2

Energy Rating

B

CO2 Emission Rating

B