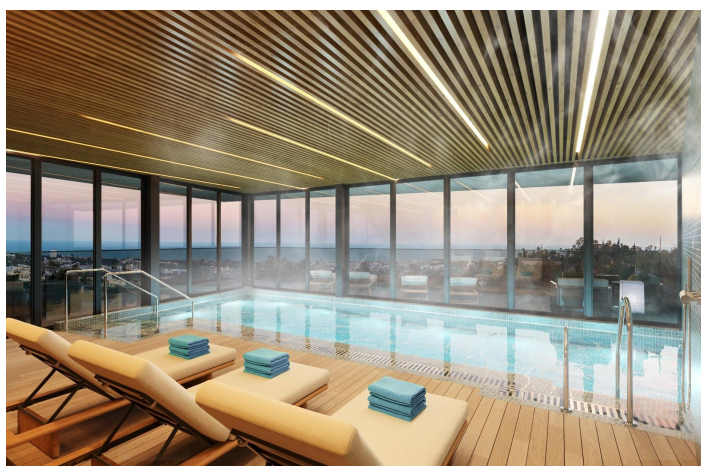




## Apartment for sale in Benahavís, Benahavís

1,280,000 €

Reference: SP0380   Bedrooms: 3   Bathrooms: 3   Build Size: 146m<sup>2</sup>   Terrace: 55m<sup>2</sup>





---

## Costa del Sol, Benahavís

### EXCLUSIVE URBANISATION WITH SEA VIEWS ON THE COSTA DEL SOL

Development of 56 exclusive 3 and 4 bedroom homes with panoramic sea views, distributed in 7 blocks with only 2 homes per floor, which further increases their exclusivity. Fully equipped kitchens. All bedrooms en suite, with an extra bathroom for guests. Each bedroom has direct access to the terrace, so you can wake up with the best views of the Costa del Sol and enjoy breathtaking views of the entire coastline and the Bay of Marbella, up to the Rock of Gibraltar and Africa in the background.

Gated community with security, gardens, 3 swimming pools to choose between swimming, leisure or indoor pool, to enjoy the long periods of good weather that the Costa del Sol offers you. Co-working area, fully equipped gymnasium, and a fabulous spa to relax in.

It is located halfway between Malaga and Gibraltar airports, making both accessible in just over 40 minutes by car. Surrounded by the best golf courses on the Costa del Sol. Just 10 minutes drive from the beach, with its beach bars and distinguished clubs, and the same distance from Puerto Banús, with its marina, one of the most famous in Europe.

Of all the Mediterranean coastline, the beaches, towns and golf courses of the Costa del Sol are the only ones where you can enjoy more than 320 days of sunshine a year and an average annual temperature of 20° Celsius. A place to enjoy the true Mediterranean lifestyle.



## Features:

Gym	Jacuzzi	Views: Sea
Heating: Yes, Air Conditioning: Yes	Location: Mountain, Urbanisation	Terrace: 55 Msq.
Useable Build Space: 125 Msq.	Parking - Space	Near Trees
Near Commercial Center	Near Golf / Golf Resort Property	Near bus route
Communal Pool	Gated	Beach: 6000 Meters
Number of Parking Spaces: 1	Near Schools	WC: 1
Double Bedrooms: 3	Elevator/Lift	