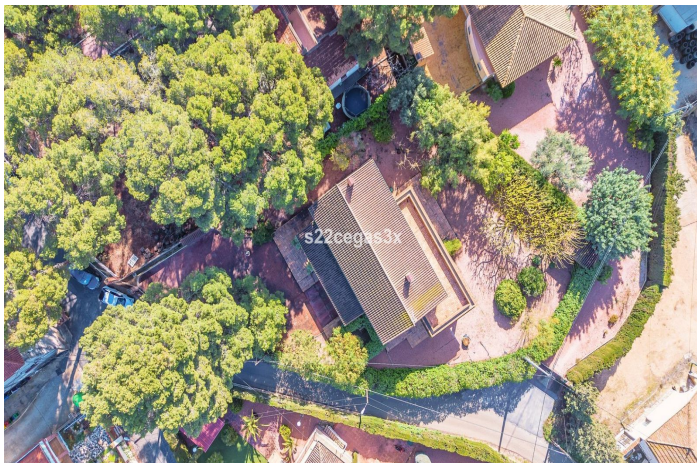




Detached Villa for sale in Elda, Elda

420,000 €

Reference: R5042731 Bedrooms: 4 Bathrooms: 3 Plot Size: 1,160m² Build Size: 342m² Terrace: 130m²





Vinalopó Medio, Elda

Stunning Chalet at Club de Campo, Elda – Exquisite Design and Maximum Exclusivity

Are you looking for the perfect home that combines luxury, comfort, and a strategic location? This spectacular independent chalet located in the exclusive area of Club de Campo in Elda (Alicante) is the ideal place for you. Designed with meticulous attention to detail, this property offers a unique lifestyle connected to nature while being perfectly linked to key services.

Main Features:

Private Plot: 1,160 m² of urban land ensuring privacy and tranquility with a maximum buildable area of 468 m².

Built Area: 380 m² with carefully distributed spaces including 250 m² indoors; an additional 80 m² on porches and another set measuring up to 50 m² on terraces.

Perfect Layout: Two-story house plus semi-basement garage featuring a living-dining room of 60m²; master suite with private terrace; versatile lounge-study space.

Southwest Orientation: Enjoy natural light throughout the day along with unobstructed views.

Outdoor Areas: Well-maintained gardens accompanied by ample terrace suitable for gatherings alongside premium finished barbecue zone.

Luxury Equipment [amp;] Details:

n Fully equipped kitchen furnished using modern appliances complemented by pantry storage options.

n Efficient heating system supplemented via fireplace found within main salon aiming towards enhanced warmth experience during colder months .

n High-quality finishes showcasing wooden carpentry works paired well rustic flooring appearance amongst various rooms available across dwelling unit itself.

Air conditioning split systems installed both bedrooms include study-living areas allowing residents enjoy optimal climate control settings year-round ! Spacious built-in wardrobes present every bedroom enhancing overall organization aspects related personal belongings management through out whole household residence design approach adopted here too!

Location unmatched : Located prestigious development known as "Club De Campos" involves convenient access routes leading directly onto highways connecting rapidly neighboring cities such Valencia/Airports alike just twenty minutes away! Furthermore proximity schools/supermarkets/public transport make it great choice families seeking tranquil yet comfortable retreat environment where live comfortably without compromising essential daily amenities required life-style choices allocating therein favored experiences this community entails uniquely offered unto all who seek expressively what true essence means finally discovered... Unique Lifestyle Experience!: The highlighted features provided above indicate how luxurious elegance remains seamlessly intertwined spaciousness outdoor atmospheres offering unlimited opportunities creating unforgettable moments each single day's worth lived together under one roof!!! Ideal candidate selection ranges from family units telecommuters even those searching second homes characterized epitomes class associated highest standards achievable possible today... Contact us right now gather further information arrange visit because chances limited won't last long!



Features:

Features

Private Terrace

Solarium

Barbeque

Basement

Condition

Good

Parking

Garage

Orientation

South West

Climate Control

Fireplace

Furniture

Part Furnished

Kitchen

Fully Fitted

Energy Rating

D

CO2 Emission Rating

D