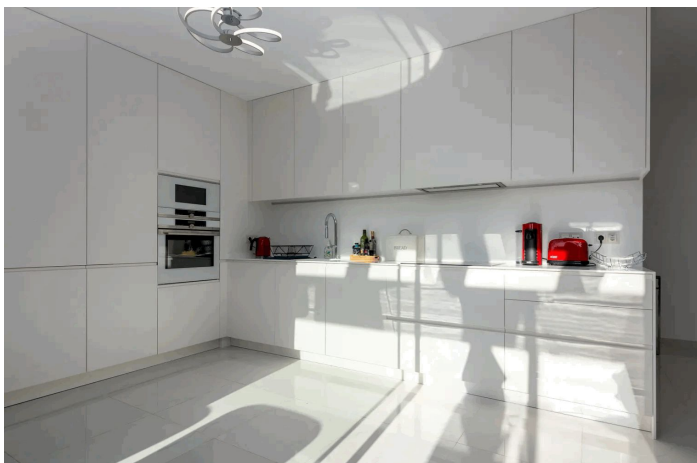




Penthouse for sale in Estepona, Estepona

1,195,000 €

Reference: R5044249 Bedrooms: 3 Bathrooms: 2 Build Size: 134m² Terrace: 145m²





Costa del Sol, Estepona

Luxury 3-Bedroom Duplex Penthouse for Sale in Cataleya, Phase III, Atalaya Golf – Panoramic Views & Resort Amenities Experience contemporary luxury on the New Golden Mile: a 3-bedroom, 2-bathroom duplex penthouse in the prestigious Cataleya development at Atalaya Golf & Country Club, Estepona. With expansive terraces totaling over 150m², a private solarium, and unobstructed panoramic views of the golf course and surrounding mountains, this residence blends resort-quality amenities with a refined, home-first layout. & Property Highlights 3 Spacious Bedrooms | 2 Bathrooms (including master en-suite) Open-plan living and dining area with direct access to a large terrace Floor-to-ceiling windows flood the home with natural light Modern fully equipped kitchen with premium appliances..optional interior furnishing Private solarium and large terraces perfect for outdoor living 2 underground parking spaces + storage room This contemporary penthouse in Cataleya features high-end finishes, sleek design, and a generous floor plan ideal for both family living and entertaining. Enjoy seamless indoor-outdoor flow with moveable glass partitions that open to stunning views over the golf course and surrounding mountains. Exclusive Community Amenities 450 m² outdoor lagoon-style swimming pool with beach-entry Heated indoor pool for year-round use Over 27,000 m² of landscaped tropical gardens and green zones Secure, gated community with high privacy Walking distance to Atalaya Golf and El Paraíso Golf Clubs Prime Location in Atalaya, Estepona Perfectly situated between San Pedro de Alcántara, Benahavís, and Marbella, this penthouse offers easy access to international schools, restaurants, shops, beaches, and golf resorts — all within a 10-15 minute drive. Contact us today to schedule a private viewing of this exclusive Cataleya duplex penthouse with panoramic golf views



Features:

Features

Covered Terrace
Lift
Near Transport
Satellite TV
Ensuite Bathroom
Marble Flooring
Fitted Wardrobes
Solarium
WiFi
Gym
Utility Room
Fiber Optic

Views

Mountain
Panoramic
Garden
Pool
Golf
Pool

Communal

Garden

Communal

Utilities

Electricity
Drinkable Water
Telephone

Orientation

South West

Setting

Close To Port
Close To Sea
Close To Shops
Close To Town
Close To Schools

Furniture

Optional

Security

Gated Complex
24 Hour Security
Electric Blinds

Category

Holiday Homes
Investment
Luxury
Resale
Contemporary

Climate Control

Air Conditioning

Condition

Excellent

Kitchen

Partially Fitted
Kitchen-Lounge

Parking

Private