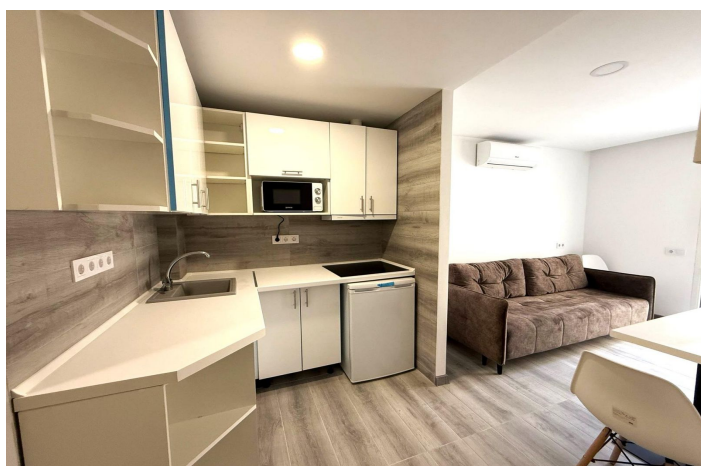




## Duplex for sale in Torrevieja, Torrevieja

260,000 €

Reference: R5045599 Bedrooms: 2 Bathrooms: 2 Build Size: 88m<sup>2</sup>





---

## Costa Blanca South, Torrevieja

Modern bungalow-dúplex in Torrevieja close to the beach PROPERTY: This satisfaction assets placed in Torrevieja near all of the facilities and the maximum critical to the beach. It's dispensed into 2 floors. We need to provide you with the steps and subsequently we're at the terrace of the assets, at the proper hand facet we've the dwelling place related to the kitchen, the bed room with an get admission to to the terrace and totally-prepared and contemporary-day toilet. All the housing has an air-conditioning,all new furnishings and decoration. Once we step into to the following ground, we`ve were given a spacious dwelling place with an get admission to to the terrace. Interesting to feature that there's a further hidden mattress withinside the dwelling place. The fully-prepared kitchen is attached to the dwelling-place.The toilet is new and contemporary-day.There is the two bed room that is vibrant and spacious. The assets has greater area wherein you could garage your private items, The housing has a tourist license because of this that it may be rented out and make profit. LOCATION: Torrevieja is in the province of Alicante (Costa Blanca). It is famous for its Mediterranean climate and its coast. We cannot forget its promenades where we can find some restaurants along the fine sandy beaches. It also has many excellent beaches such as Playa de los Náufragos, Playa de los Locos and Playa de la Mata. Therefore, it is considered a remarkable tourist town where the environment takes an important place as an important tourist attraction. In addition, we can find many shopping centres (Habaneras, La Zenia Boulevard), golf courses, sport centres, hospitals (such as Hospital Universitario de Torrevieja) and airports such as Alicante Airport (35 km away) and Region of Murcia International Airport (43 km away). DISTANCE TO THE BEACH:300M DISTANCE TO THE SERVICES:50M IBI COSTS: COMMUNITY COSTS:



---

## Features:

### Features

Wood Flooring

### Orientation

South East

### Climate Control

Air Conditioning

Central Heating

### Condition

Excellent

### Furniture

Part Furnished

### Kitchen

Fully Fitted