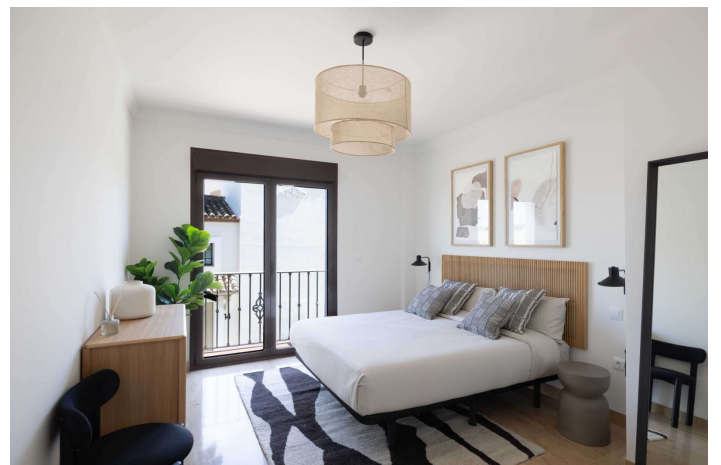




Townhouse for sale in Valle Romano, Estepona

405 000 - 593 750 €

Référence: R5049157 Chambres: 3 Bain: 2 Construite: 230m² - 263m² Terrasse: 15m² - 79m²





Costa del Sol, Valle Romano

Welcome to the residential complex in Estepona, your new home on the Costa del Sol. The residential development is an exclusive promotion of 87 single-family homes ready to move into, located in the west area of Estepona, next to the new High Resolution Hospital and right on the golf course. This area, undergoing significant urban expansion, is becoming one of the most prestigious and promising residential destinations on the Costa del Sol. The homes, spread over two floors plus a basement, have three bedrooms and two bathrooms, large private terraces, and in some cases, a solarium with stunning views of the sea and the golf course. Designed in a modern style inspired by Mediterranean architecture, they offer bright rooms, marble floors, double-glazed windows, electric blinds, and a whirlpool bathtub designed for your wellbeing and comfort. The residential complex includes exclusive common areas such as indoor and outdoor swimming pools, a spa and gym, as well as redesigned gardens that bring harmony and wellbeing. The entire development is being completely renovated, both inside and out, to offer a high-quality, functional, and elegant environment. Thanks to its strategic location, surrounded by nature and perfectly connected to Estepona, Marbella, Sotogrande, and the airports of Málaga and Gibraltar, this development represents a unique investment and lifestyle opportunity on the Costa del Sol. Immediate delivery.



Spécification:

Caractéristiques

Terrasse couverte
Terrasse privée
Salle de stockage
Sol en marbre
Double vitrage
Armoires ajustées
Salle de sport
Sous-sol

Vues

Mer
Panoramique
Pays
Golf

Piscine

Communautaire
Indoor

Sécurité

Complexe fermé
Téléphone d'entrée

Orientation

Est
Sud-Est

Paramètre

Près du golf
Près de la mer
Proche des magasins
Près de la ville
Près des écoles
Golf de première ligne

Cuisine

Cloison

Parking

Souterrain
Garage
Private

Climatisation

A / C pré-installé

Condition

Nouvelle construction

Jardin

Communautaire

Catégorie

Nouveau développement