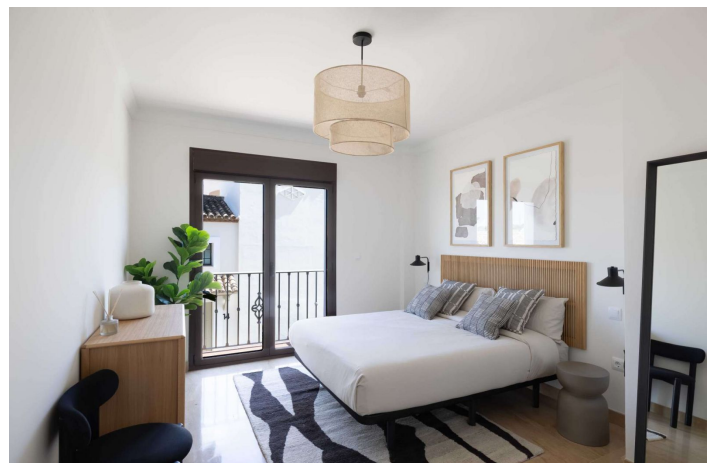




Townhouse for sale in Valle Romano, Estepona

405.000 - 593.750 €

Referentie: R5049157 Slaapkamers: 3 Badkamers: 2 Perceelgrootte: 230m² - 263m² Terras: 15m² - 79m²





Costa del Sol, Valle Romano

Welcome to the residential complex in Estepona, your new home on the Costa del Sol. The residential development is an exclusive promotion of 87 single-family homes ready to move into, located in the west area of Estepona, next to the new High Resolution Hospital and right on the golf course. This area, undergoing significant urban expansion, is becoming one of the most prestigious and promising residential destinations on the Costa del Sol. The homes, spread over two floors plus a basement, have three bedrooms and two bathrooms, large private terraces, and in some cases, a solarium with stunning views of the sea and the golf course. Designed in a modern style inspired by Mediterranean architecture, they offer bright rooms, marble floors, double-glazed windows, electric blinds, and a whirlpool bathtub designed for your wellbeing and comfort. The residential complex includes exclusive common areas such as indoor and outdoor swimming pools, a spa and gym, as well as redesigned gardens that bring harmony and wellbeing. The entire development is being completely renovated, both inside and out, to offer a high-quality, functional, and elegant environment. Thanks to its strategic location, surrounded by nature and perfectly connected to Estepona, Marbella, Sotogrande, and the airports of Málaga and Gibraltar, this development represents a unique investment and lifestyle opportunity on the Costa del Sol. Immediate delivery.



Kenmerken:

Extra's

Overdekt terras
Privé Terras
Berging
Marmeren vloeren
Dubbele beglazing
Inbouwkasten
Sportschool
Kelder

Uitzicht

Zeezicht
Weids
Country Bekeken
Golf Bekeken

Zwembad

Gemeenschappelijk zwembad
binnenzwembad

Beveiliging

Omheind complex
Deurbel met intercom

Zonorientatie

Oosten
Zuidoost Zonoriëntatie

Ligging

Dichtbij golfbaan
Dichtbij zee
Dicht bij winkels
Dichtbij stad
Dichtbij scholen
Eerstelijns golf

Keuken

Kitchen-Lounge

Parkeergelegenheid

ondergrondse parkeergarage
garage
private Parking

Klimaatbeheersing

Vooraf geïnstalleerde A/C

Huidige Staat

Nieuwbouw

Tuin

gemeenschappelijke tuin

Categorie

Nieuwbouw