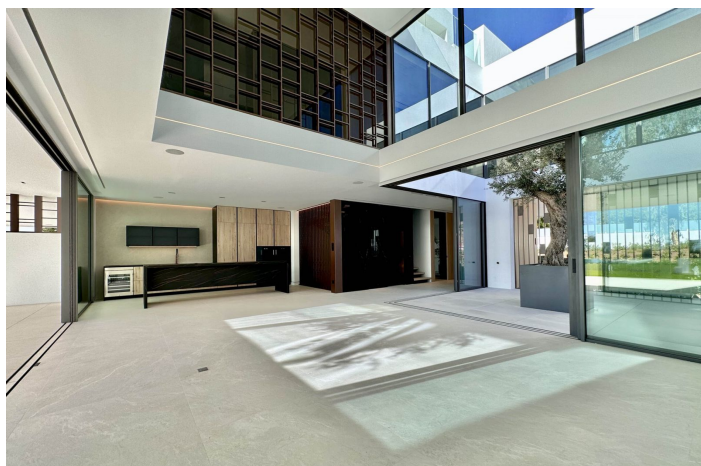
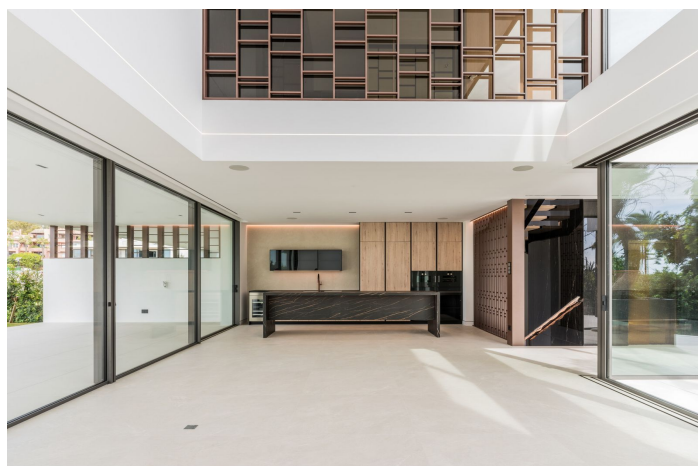




Semi-Detached House for sale in Nueva Andalucía, Marbella

5 250 000 €

Référence: R4749622 Chambres: 4 Bain: 5 Terrain: 154m² Construite: 442m² Terrasse: 235m²





Costa del Sol, Nueva Andalucía

Brand new Villa located in a heart of Nueva Andalucia, Marbella. Walking distance to Puerto Banus and all amenities, close to Aloha Golf Club & Las Brisas Golf Club, and just 1,5 km from the beach. Houses were built in 2024. The residential is completely gated and private, counting with a spectacular entrance, which gives access to 6 impressive "Vilas" with state-of-the-art design. Within the entrance we can find the reception and the security guard post. The extensive outdoor spaces and gardens around the "Vilas", give way to a new concept of swimming pool of almost 180 m2 plus a 36 m2 children's pool, both with chlorination water treatment. The beautifully built Villa on 4 levels offers high quality, stylish and bright living room open to the large and elegant terrace. All 3 bedroom suites include floor-to-ceiling windows, a sleek minimalist kitchen. All 4 levels are connected by a modern elevator. Terraces leading out to a private area of garden – as well as having access to the beautifully landscaped communal gardens and swimming pool. Roof terrace with private swimming pool and outdoor cinema. A customizable basement provides ample space for a home gym, an additional bedroom or room for any other use, such as an office. Villa 6.2 has a parking space for 4 cars within the communal underground parking area. Due to its orientation and position, the entire complex enjoys natural light most of the day, and Villa is completely filled of luminosity through its incredible windows as well as through the "Central courtyard". It is also a fact that the residents will be able to enjoy the most incredible sunrises and sunsets from the spacious terraces.



Spécification:

Caractéristiques

Terrasse couverte
Ascenseur
Près du transport
Double vitrage
Réception 24 heures
Armoires ajustées
Solarium
Buanderie
Domotique
Sous-sol

Paramètre

Zone commerciale
Près du golf
Près du port
Urbanisation
Près de la mer
Proche des magasins
Près de la ville
Près des écoles

Meubles

Non meublé

Sécurité

Complexe fermé
Sécurité 24 heures

Orientation

Sud-ouest

Condition

Excellent
Nouvelle construction

Cuisine

Entièrement équipé

Parking

Souterrain
Private
Plus d'un

Climatisation

Climatisation
Chauffage U / F

Piscine

Communautaire
Chauffé
Private
Piscine pour enfants

Jardin

Communautaire
Private

Catégorie

Maisons de vacances
Investissement
Marchander
Golf
Luxe
Revente
Contemporary