



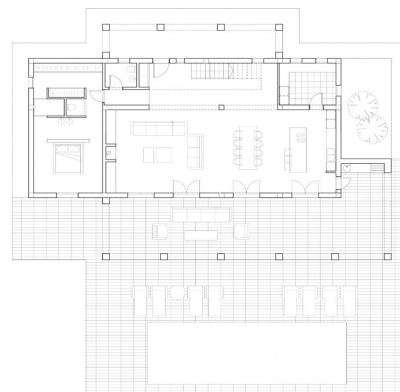
Detached Villa for sale in Moraira, Teulada

1,795,000 €

Reference: N6425 Bedrooms: 4 Bathrooms: 4 Plot Size: 13,000m² Build Size: 346m² Terrace: 300m²



Superficie	Construcción
Puerta 1001	
Vivienda	168.33 m ²
Puerta 1	22.54 m ²
Puerta 2	77.57 m ²
Terraza	147.00 m ²
Puerta	48.00 m ²
Puerta	45.00 m ²
Puerta 1010	
Vivienda	97.00 m ²
Puerta 1010	
Vivienda	81.54 m ²
Bodega	12.40 m ²



PLANTA BAJA
0m - 1m - 2m - 3m - 4m - 5m



Costa Blanca North, Moraira

Newly built villa in Teulada with mountain views On the ground floor we find a large living-dining area and open plan kitchen, master bedroom with walking wardrobe and bathroom, front terrace with access to the pool. On the first floor is 3 bedrooms with fitted wardrobes, 3 bathrooms en suite. As well here you have basement of 81m2 with wine cellar. Villa will be build using high quality materials. The kitchen will be chosen by the client, kitchen cabinets, worktop and appliances. Air conditioning with climate control system (condense) in the living rooms and bedrooms. Mitsubishi brand. The swimming pool will be built with an outdoor shower (hot/cold water connection). Automatic entrance gate for the cars with remote control and automatic pedestrian door. Garden to be chosen by the client. Moraira is a small town with with good restaurants, bars and plenty of supermarkets around. There is a very pleasant beach right next to town that is great for families. The seafront offers tremendous views of Penon Ifach across the bay in Calpe. The coast road getting there is well worth doing with some spectacular views. Moraira situated about 1 hour 15 minutes North up the A7 from Alicante airport its fairly easy to get to. It's about the same distance or a little less South from Valencia airport.



Features:

Beach: 3500 Meters

Useable Build Space: 300 Msq.

Under-Build / Basement

Number of Parking Spaces: 1

Air Conditioning: Pre-Installed

Private pool

Parking - Space

Double Bedrooms: 4

Near Schools

Solarium: Yes

garden

Near Commercial Center

Gated

Location: Coastal, Mountain,

Urbanisation

Terrace: 300 Msq.