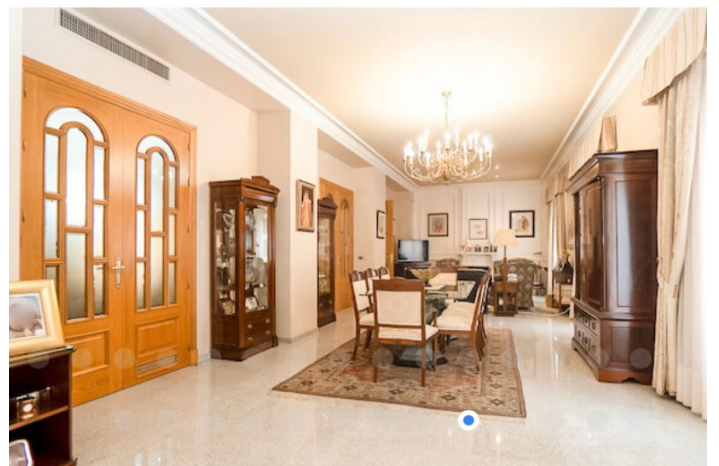




## Townhouse for sale in Jumilla, Jumilla

676,000 €

Reference: RS21874 Bedrooms: 4 Bathrooms: 2 Build Size: 518m<sup>2</sup>





---

## Altiplano, Jumilla

Welcome to this stunning 518 m<sup>2</sup> residence nestled in the heart of Jumilla, Murcia. Designed with family life in mind, this three-story house offers an abundance of space for every member. Upon entering, you are greeted by a spacious and luminous living room, setting the tone for the entire home. The fully-equipped, independent kitchen ensures seamless functionality, complete with modern appliances. Four bedrooms provide ample private space, complemented by two full bathrooms, one featuring a luxurious jacuzzi, and two convenient toilets. The villa boasts a balcony flooding the room with natural light, a terrace for enjoying the outdoors, and fitted wardrobes plus a storage room to cater to your organizational needs. From these spaces, revel in panoramic views of the enchanting Jumilla castle, creating a picturesque backdrop. With an exterior orientation, the property basks in sunlight, especially during the central hours of the day, thanks to its strategic south-facing position. Access is a breeze, courtesy of its convenient location on an easily accessible road. Offered furnished and in impeccable condition, this residence is ready for you to move in and make it your own. The thoughtful details include air conditioning with a heat pump, a fireplace, wooden carpentry, and parquet and marble floors, adding both style and comfort. Strategically positioned just 40 meters from the town hall and in proximity to a well-connected bus stop, this property is not only a home but a lifestyle. For added convenience, a school is just a stone's throw away, making this a perfect choice for families. Don't miss the opportunity to call this well-appointed house your home, where comfort meets style in the heart of Jumilla. If you liked this property, do not hesitate to contact us to organize a visit, we will be happy to help you!