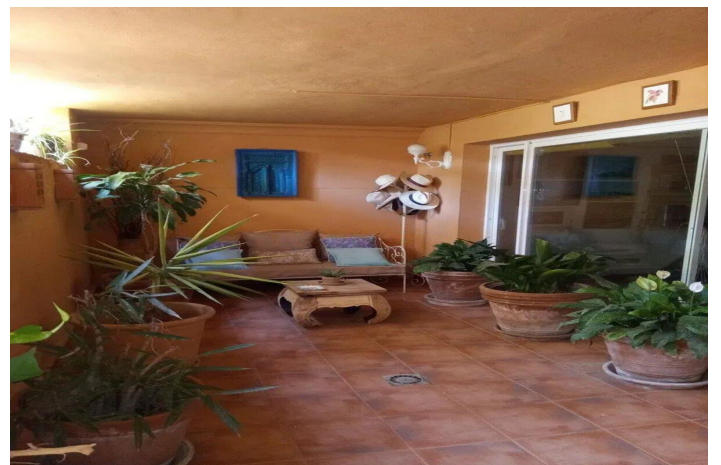
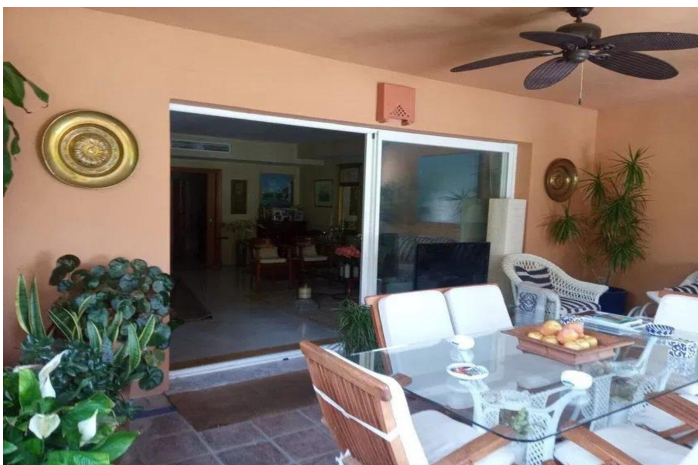




Townhouse for sale in The Golden Mile, Marbella

1.600.000 €

Referenz: R4764316 Schlafzimmer: 3 Badezimmer: 4 Garten: 300m² Terrasse: 50m²





Costa del Sol, The Golden Mile

Spacious townhouse in the Golden Mile next to the Hotel Puente Romano and the Hotel Alanda Marbella, and walking distance to the beach. The house is distributed over four levels: the main floor consists of an entrance hall, a guest toilet, a fully equipped kitchen with an office, a splendid living room with a fireplace and a large double glazed enclosure that leads to a summer dining porch with access to the garden and the private pool. A staircase takes you to the first floor where you will find the large master bedroom with a dressing area, an en-suite bathroom with a jacuzzi and a shower tray and a large private terrace, a second guest bedroom with an en-suite bathroom, a large built-in wardrobe and a private terrace. On the upper floor there is a beautiful attic bedroom, also with an en-suite bathroom, a built-in wardrobe and access to a large solarium with afternoon sun and views of the mountains surrounding Marbella such as La Concha. The semi-basement is completely open plan and has an adjoining storage room and access to the underground garage with two large parking spaces. Likewise, and through a large glass window, it has access to a chill-out porch with a staircase that gives access to the garden and pool. Finally, the large garden has some fruit trees and tropical plants that give it a very peculiar character and the possibility of enjoying the sun and its magnificent private pool. Features: 450 useful M2 East/West orientation 3 bedrooms with en suite bathroom and 1 guest toilet. DAIKIN hot-cold ducted air conditioning system, with independent on/off in bedrooms and living room. 2 terraces and 1 solarium. Large covered porch. 4 parking spaces, 2 underground and 2 outdoor. Fireplace. Electric blinds. Second hand/perfect condition. Security.



Eigenschaften:

Merkmale

Überdachte Terrasse

Private Terrasse

Lagerraum

Zustand

Exzellent

Parken

Unterirdisch

Garage

Privat

Bedeckt

Mehr als eins

Orientierung

West

Südwesten

Pool

Privat

Klimakontrolle

Klimaanlage

Garten

Privat