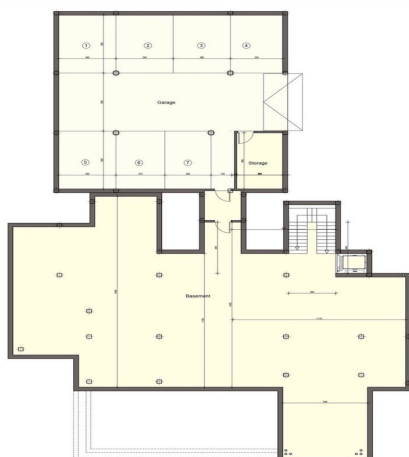




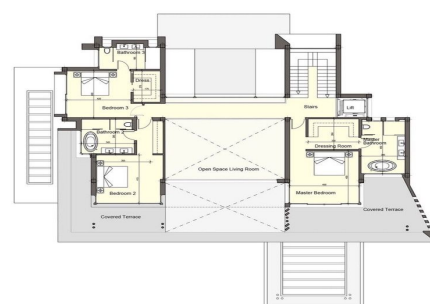
# Residential Plot for sale in Benahavís, Benahavís

750 000 €

Référence: R4059550 Terrain: 3 550m<sup>2</sup>



BASEMENT  
POOL TERRACE  
PARKING



UPPER FLOOR  
POOL TERRACE  
COVERED TERRACE



---

## Costa del Sol, Benahavís

This stunning and private plot of 3,550 m<sup>2</sup> is nestled within the exclusive Monte Mayor urbanisation, offering 24/7 security and complete tranquillity. Positioned on a protected hillside, the plot boasts breathtaking panoramic views of the Mediterranean Sea, surrounding mountains, and lush countryside forests. With its southeast orientation, the location ensures an abundance of natural light and stunning sunrises, making it the perfect setting for a luxurious residence. The plot comes fully prepared for construction, with all land preparation completed, including a finished eco-retaining wall. It also includes a signed project by the renowned Villarroel-Torrico architects, celebrated for their iconic design of Marina Puente Romano. The proposed villa is a modern masterpiece, featuring a sleek contemporary design with approximately 1,500 m<sup>2</sup> of construction, including a spacious basement and parking area. The design incorporates an infinity pool that seamlessly merges with the natural surroundings, creating a harmonious blend of luxury and nature. Located within the Benahavss municipality, the plot is ready for immediate development, with a building license obtainable within just three months. Monte Mayor offers a serene yet accessible location, combining privacy with proximity to world-class golf courses, renowned international schools, and the vibrant dining and shopping scenes of Marbella and Puerto Banús. Whether as a primary residence or a vacation retreat, this property is a rare opportunity to create a bespoke luxury home in one of the Costa del Sol's most sought-after areas. All property information provided comes directly from the owner. The listing agent acts solely as an intermediary and cannot guarantee the accuracy or completeness of these details. Prospective buyers are encouraged to conduct their own due diligence to verify important information. Thank you for your understanding.



## Spécification:

### Orientation

Sud-Est

### Vues

Mer

Montagne

Panoramique

Pays

### Catégorie

Luxe

### Paramètre

Près du golf

Proche des magasins

Près de la ville

Près des écoles

### Sécurité

Complexe fermé

Sécurité 24 heures