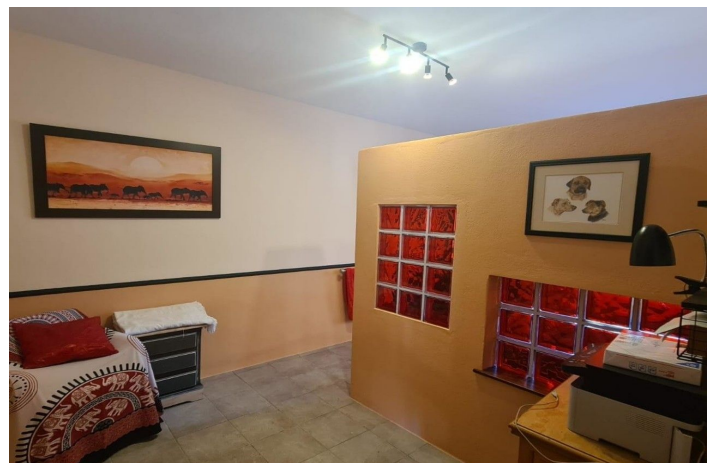
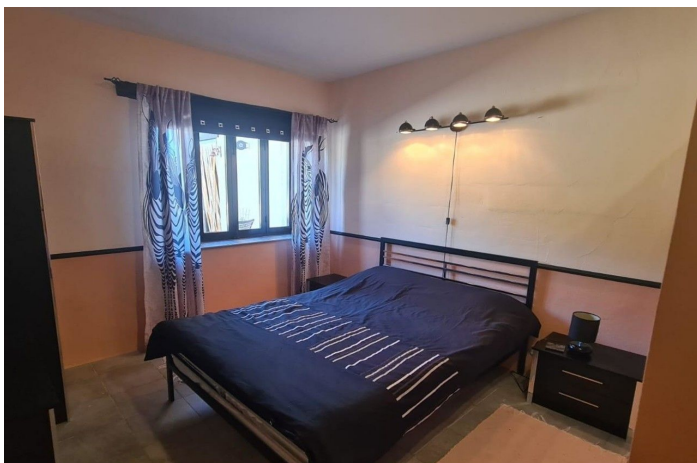




## Finca - Rural Estate for sale in Chirivel, Chirivel

280,000 €

Reference: R5139466 Bedrooms: 7 Bathrooms: 3 Plot Size: 40,000m<sup>2</sup> Build Size: 382m<sup>2</sup>





## Inland Almeria, Chirivel

In partnership with our collaborating agent, we are pleased to offer, for sale The Forge – La Fragua A historic Countryside Retreat on the Vélez Rubio / Chirivel Border – 7 Bedrooms, 2 Homes, 40,000 m<sup>2</sup> of Land Let us introduce you to La Fragua—The Forge—a truly exceptional Andalusian property with deep historical roots and modern-day charm. Originally built in the 1920s and once a thriving blacksmith's forge, this beautiful cortijo has been lovingly reformed over the past 16 years into a warm and welcoming family home, finished to a high standard throughout. Location & Access Nestled on the Chirivel side of the Vélez Rubio–Chirivel border in Almería province, the property enjoys a private and tranquil setting just a 3-minute drive off the main road via a well-maintained rambla. The local town hall keeps the rambla in excellent condition, ensuring easy year-round access. You're just 5 minutes from the peaceful village of Chirivel and 5 minutes from the vibrant market town of Vélez Rubio, with shops, restaurants, medical services, and cultural attractions. The Plot Set on an impressive 40,000 m<sup>2</sup> of land, The Forge offers 360-degree panoramic views of rolling hills, open countryside, and distant mountains—perfect for those seeking space, peace, and connection with nature. The Property Layout The property comprises two independent homes—ideal for extended families, guest accommodation, or potential tourism rental (Casa Rural, with the appropriate licensing). Both homes are finished to a high standard, each with its own character and thoughtful design. House 1 – Ground Floor (4 Bedrooms) You enter the home via a private driveway with ample parking. Stepping inside: ■Kitchen: A fully fitted country-style kitchen with breakfast bar and range-style cooker, beautifully finished and designed for comfort and practicality. ■Reception area: An open-plan layout connects the kitchen to the dining room through a wide archway, enhancing the sense of space and light. ■Dining Room: Elegantly decorated with a large solid wood beam framing ■Living Room: Features a log burner, double patio doors leading to the outdoor terrace, and breath-taking views. ■Reception Hall: A charming secondary reception area with front door access and a second wood burner. ■Family Bathroom: Generously sized with both a bathtub and separate shower. ■Bedroom 1: A large double room with a feature wall and scenic window views. ■Bedroom 2: Another spacious double with a warm, inviting ambiance and stunning outlook. ■Master Bedroom: Beautifully finished, with double doors to the patio and far-reaching views. ■Bedroom 4: A cosy single bedroom that retains elements of the original forge walls, offering character and charm. House 2 – First Floor (3 Bedrooms) ■Accessed via an external staircase: ■Entrance Hall / Reception Room: Behind original wooden doors, this welcoming space sets the tone for the upper residence. ■Bathroom: A large family bathroom with bath and shower. ■Bedroom 1: Currently used as a twin room, light-filled with a calming atmosphere. ■Kitchen / Dining Room: A stunning modern fitted kitchen with log burner, spacious enough for family meals and gatherings. ■Living Room: Features vaulted ceilings with exposed wooden beams, log burner, and French doors opening onto a private balcony terrace with BBQ area and uninterrupted countryside views. ■Bedroom 2: Another airy and bright double room with picture windows. ■Master Bedroom: A large double with lovely views and an ensuite bathroom with walk-in shower. Outdoor Space ■Two patio areas – one at the front and another at the rear of the property, perfect for outdoor living. ■Pretty garden area to the side, ideal for relaxing or growing your own produce. ■Expansive land suitable for horses, glamping, agriculture, or future tourism projects (with the correct licenses in place). Additional Features ■Two septic tanks ■local internet provider ■Ample space and privacy ■Plenty of parking Lifestyle & Opportunity Whether you're looking for a large, comfortable family home, multi-generational living, or an investment opportunity in the Spanish countryside, The Forge offers incredible flexibility. Move straight in and start enjoying the Andalusian sunshine or pursue your dream of hosting guests, running a retreat, or developing a rural holiday business. This is a property you truly must see to believe—a rare combination of history, quality, space, and location. With proximity to both small-town charm and all amenities, La Fragua is your gateway to a peaceful and fulfilling life in southern Spain. Contact us to arrange a viewing \* 2 floors \* Build Size 382 m<sup>2</sup> \* Plot Size 4,00 hectares \* Ground floor \* Penthouse \* Water \* Electricity \* Telephone Possible \* Internet Possible \* Furniture Negotiable \* Disabled Friendly \* Private Terrace \* Private parking \* 60 minutes drive to the beach \* 5 minutes drive to the shops



## Features:

### Features

Private Terrace

### Parking

Private

### Utilities

Drinkable Water