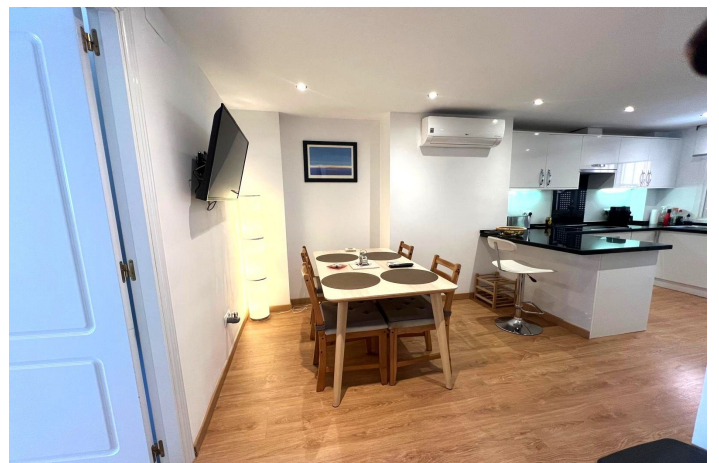
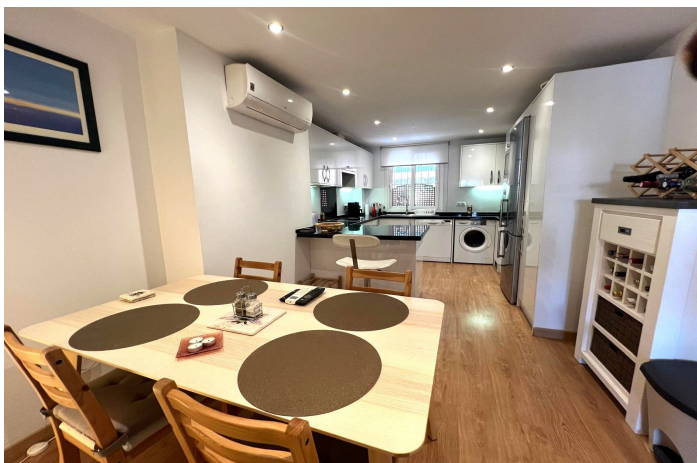




## Penthouse Duplex for sale in Atalaya, Estepona

359,000 €

Reference: R5142781 Bedrooms: 2 Bathrooms: 2 Build Size: 119m<sup>2</sup> Terrace: 39m<sup>2</sup>





---

## Costa del Sol, Atalaya

Fully Renovated Duplex Penthouse with Enclosed Terrace & Private Parking Experience comfort and exclusivity in this fully renovated duplex penthouse, where the owners have added numerous extras and dedicated exceptional attention to detail, creating a truly unique home. Located in a private residential complex with communal swimming pool, just a short walk from the nearest beach, close to shops, public transport, and amenities, and only 10 minutes by car from Estepona, Puerto Banús, and Marbella. Two international airports are just 1 hour away, making it an ideal choice for a permanent residence or a smart investment. Key Features: ✓ West-facing: Enjoy natural light and stunning sunsets. ✓ Enclosed terrace, perfect for year-round use. ✓ Private top terrace, with stunning roof top and mountain views, perfect for relaxing and watching the sunset with a drink. ✓ Complete soundproofing and triple-glazed windows for maximum privacy and comfort. ✓ High-security entrance door for peace of mind. ✓ Air conditioning and a decorative fireplace for all-season comfort. ✓ Two-level layout with potential to add a third bedroom. ✓ Private underground parking with direct lift access from the garage. ✓ Premium finishes and exclusive extras, reflecting the owners' dedication and attention to detail. Prime Location: Walking distance to the beach, shops, transport, and restaurants, with quick access to main roads connecting Marbella, Estepona, and Málaga. A truly exceptional property designed for those who value space, natural light, privacy, and the details that make a difference.



## Features:

### Features

Covered Terrace  
Lift  
Near Transport  
Private Terrace  
Ensuite Bathroom  
Marble Flooring  
Double Glazing  
Fitted Wardrobes

### Views

Mountain  
Garden

### Pool

Communal

### Garden

Communal

### Utilities

Electricity  
Drinkable Water

### CO2 Emission Rating

E

### Orientation

West

### Setting

Close To Golf  
Urbanisation  
Close To Shops  
Close To Schools

### Furniture

Optional

### Security

Gated Complex

### Category

Holiday Homes  
Investment  
Golf  
Resale

### Climate Control

Air Conditioning  
Fireplace

### Condition

Excellent  
Recently Renovated

### Kitchen

Fully Fitted

### Parking

Underground

### Energy Rating

E