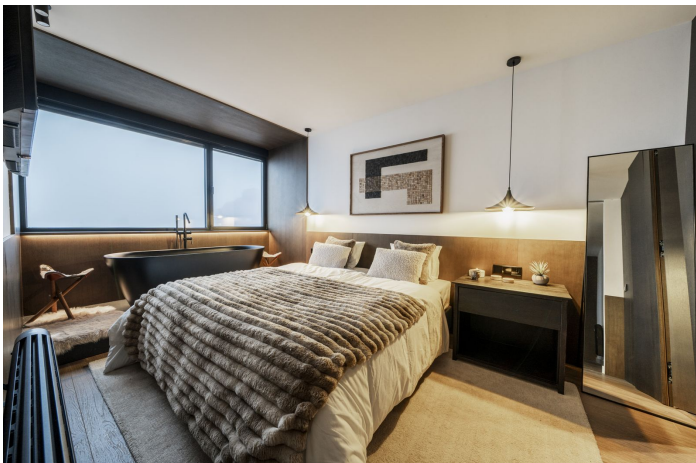




Penthouse for sale in Monachil, Granada

699.000 €

Referenz: R5143462 Schlafzimmer: 3 Badezimmer: 4 Garten: 104m²





Granada, Monachil

Positioned on the top floor of a modern building with elevator access, this high-specification apartment delivers a refined combination of comfort, quality, and alpine design. Natural stone, wood finishes, and unobstructed panoramic views of the Sierra Nevada establish a tranquil and practical retreat tailored for seasonal living. The interior layout has been designed to optimise both aesthetic appeal and daily functionality. Underfloor heating greets you at the entrance, where a natural stone feature wall sets a tone of understated luxury. A drying cabinet is integrated into the entryway, ideal for warming outerwear and boots after time outdoors. The open-plan kitchen and living area are custom-designed and equipped with Siemens appliances. A central island includes a cooktop and bar seating, while an ethanol fireplace enhances warmth and ambiance. Panoramic windows frame mountain views and maximise natural light throughout the living space. The property includes two bedrooms with mountain views, two full bathrooms (one featuring a custom sauna), and a guest WC. The master suite benefits from direct mountain-facing views, an en-suite bathroom, and a freestanding bathtub positioned to take in the scenery. Additional features include towel warmers in all bathrooms, radiator heating throughout, high-quality finishes, and Scandinavian-inspired design elements such as woven rugs, candles, and faux-fur textiles. The property includes private garage parking and is located just steps from the renewed El Lodge Hotel and direct ski lift access. This apartment is ideal for buyers seeking a modern, high-comfort mountain base in Sierra Nevada with immediate access to resort amenities.



Eigenschaften:

Merkmale

Überdachte Terrasse
In der Nähe des Transports
Private Terrasse
Lagerraum
Badezimmer
Einstellungsschränke
Sauna
Holzböden

Ansichten

Berg
Panorama

Möbel

Voll eingerichtet

Parken

Privat
Mehr als eins

Orientierung

Süden

Einstellung

In der Nähe von Geschäften
In der Nähe der Stadt

Küche

Küchenlehre

Kategorie

Luxus

Klimakontrolle

Klimaanlage
Kamin
Zentralheizung
U/f/h Badezimmer

Zustand

Exzellent

Sicherheit

Gated Complex
24 -Stunden -Sicherheit
Alarmanlage
Eingabetelefon